

UPHOLSTERY

BECA
TRADING COMPANY

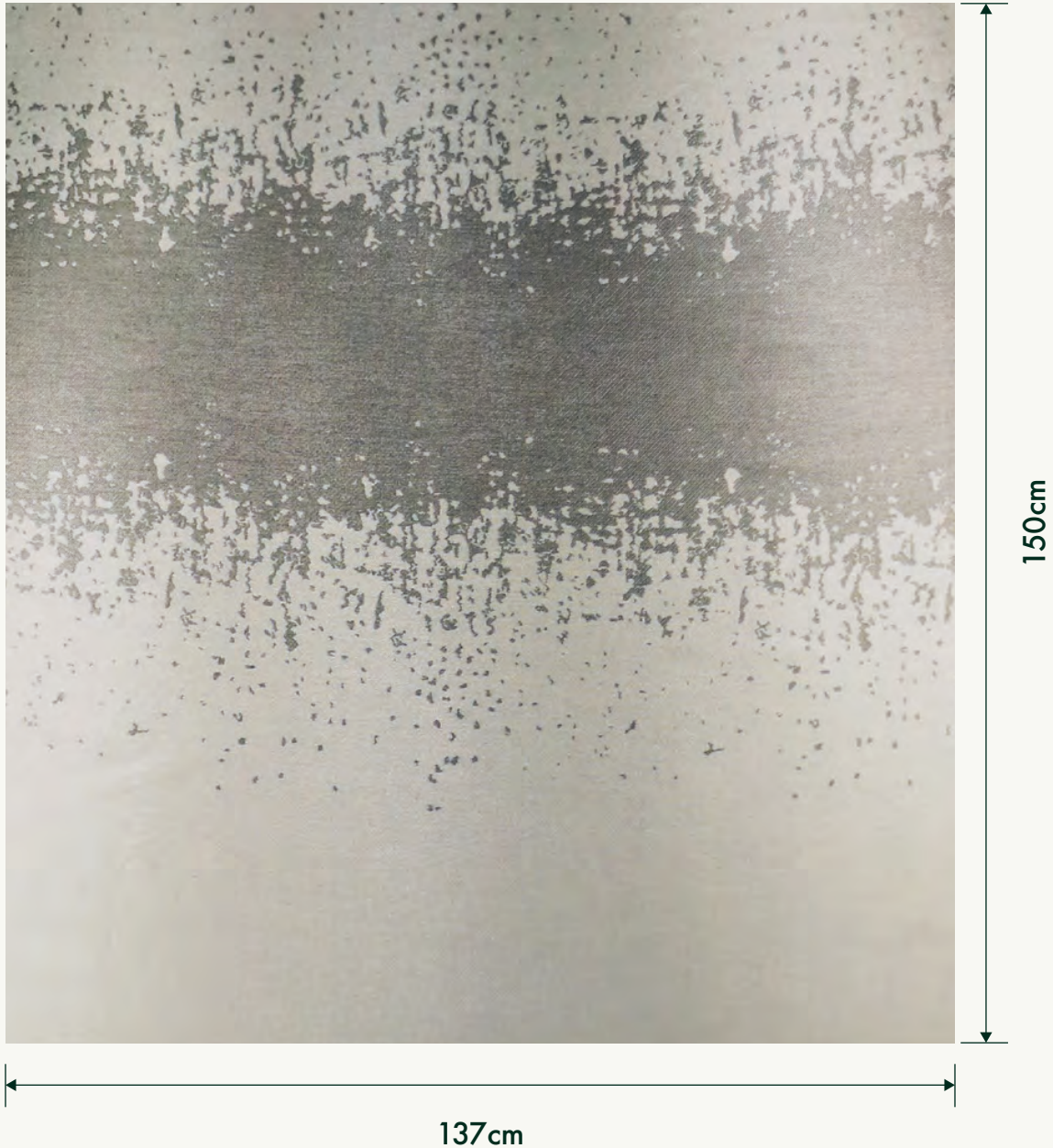
P E X O R E L

CONTENTS

| | |
|---------------------|------------|
| #M118 SERIES | P3 |
| #M119 SERIES | P7 |
| #M120 SERIES | P11 |
| #M121 SERIES | P15 |
| #M122 SERIES | P19 |
| #M123 SERIES | P23 |
| #M124 SERIES | P28 |
| #M125 SERIES | P34 |
| #M126 SERIES | P38 |
| #M127 SERIES | P43 |
| #M128 SERIES | P48 |
| #M129 SERIES | P52 |
| #M130 SERIES | P55 |
| #M131 SERIES | P58 |
| | |
| # ZX SERIES | P62 |
| | |
| # G1 SERIES | P68 |
| # G2 SERIES | P74 |
| # G3 SERIES | P78 |
| # G4 SERIES | P82 |
| # G5 SERIES | P85 |
| # G6 SERIES | P88 |
| # G7 SERIES | P92 |
| # G8 SERIES | P96 |

#M118 SERIES

Raccord Droit 137cm / Straight Repeat 150cm



#M118 SERIES

APPLICATIONS

Wallcovering
Panel

COMPOSITIONS

84% PE
16% Polyester

WIDTH

137cm



M118 - 1

#M118 SERIES

APPLICATIONS

Wallcovering
Panel

COMPOSITIONS

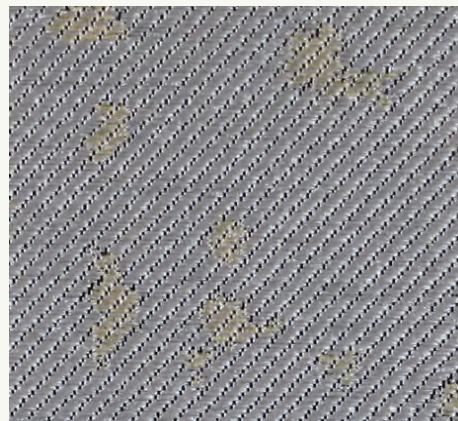
84% PE
16% Polyester

WIDTH

137cm



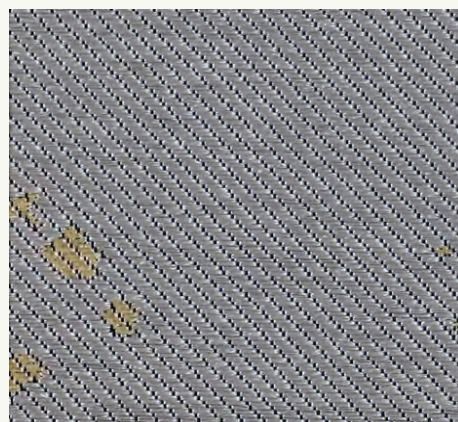
M118 - 1



M118 - 2



M118 - 3



M118 - 4



M118 - 5



M118 - 6

#M118 SERIES

APPLICATIONS

Wallcovering
Panel

COMPOSITIONS

84% PE
16% Polyester

WIDTH

137cm



M118 - 7



M118 - 8



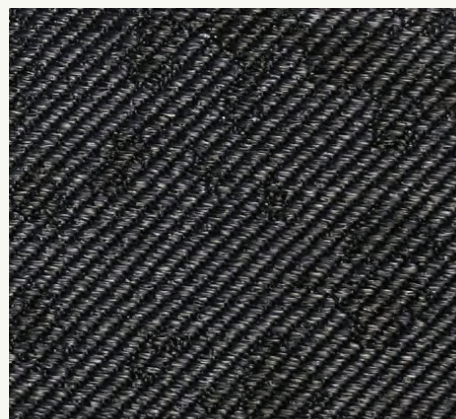
M118 - 9



M118 - 10



M118 - 11



M118 - 12

#M119 SERIES

Raccord Droit 137cm / Straight Repeat 150cm



#M119 SERIES

APPLICATIONS

Wallcovering
Panel

COMPOSITIONS

84% PE
16% Polyester

WIDTH

137cm



M119 - 1

#M119 SERIES

APPLICATIONS

Wallcovering
Panel

COMPOSITIONS

84% PE
16% Polyester

WIDTH

137cm



M119 - 2



M119 - 3



M119 - 4



M119 - 5

#M119 SERIES

APPLICATIONS

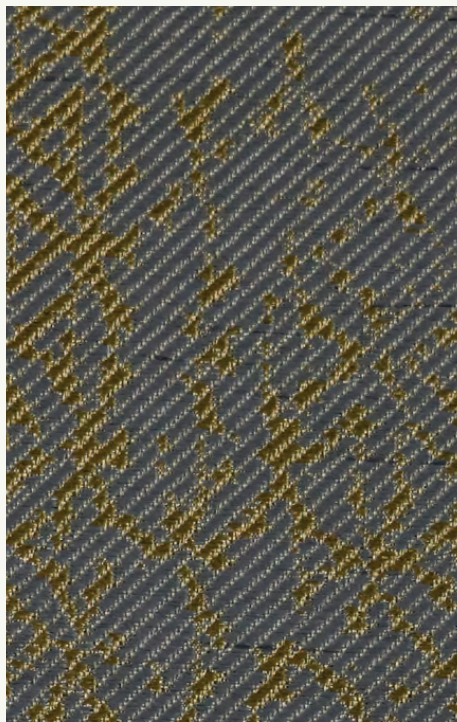
Wallcovering
Panel

COMPOSITIONS

84% PE
16% Polyester

WIDTH

137cm



M119 - 6



M119 - 7



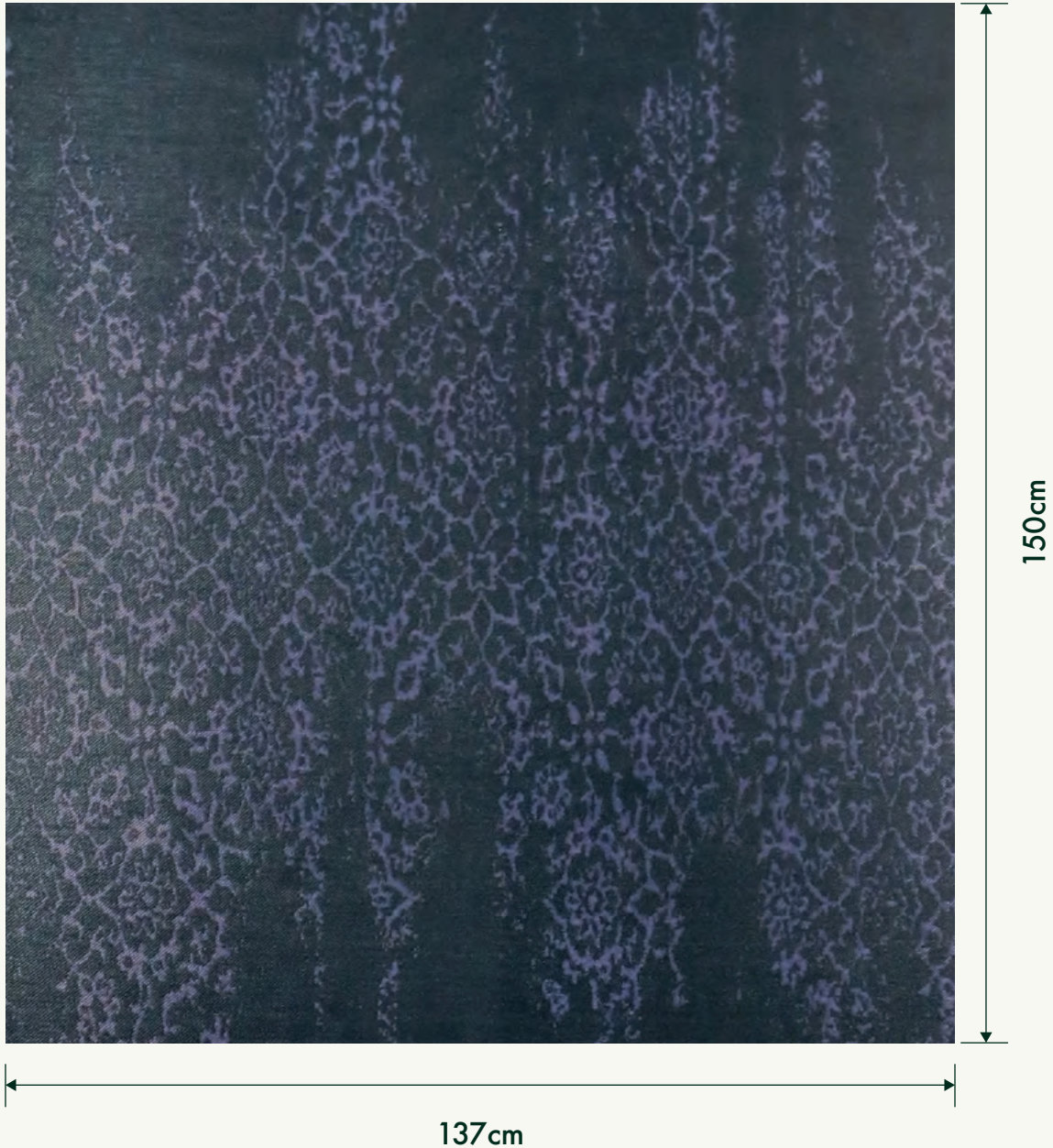
M119 - 8



M119 - 9

#M120 SERIES

Raccord Droit 137cm / Straight Repeat 150cm



#M120 SERIES

APPLICATIONS

Wallcovering
Panel

COMPOSITIONS

84% PE
16% Polyester

WIDTH

137cm



M120 - 1

#M120 SERIES

APPLICATIONS

Wallcovering
Panel

COMPOSITIONS

84% PE
16% Polyester

WIDTH

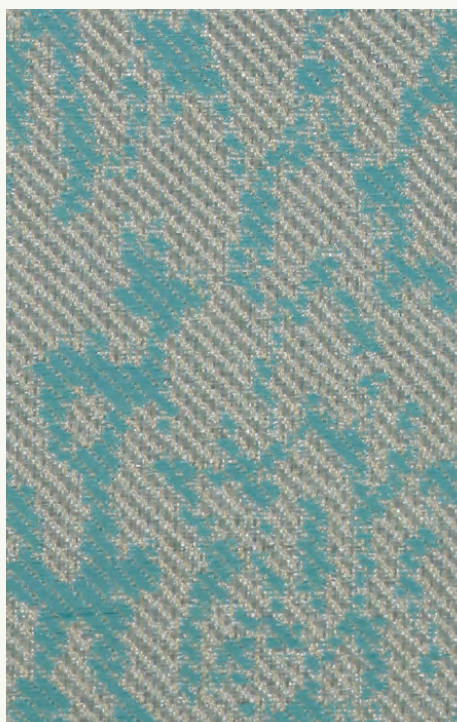
137cm



M120 - 2



M120 - 3



M120 - 4



M120 - 5

#M120 SERIES

APPLICATIONS

Wallcovering
Panel

COMPOSITIONS

84% PE
16% Polyester

WIDTH

137cm



M120 - 6



M120 - 7



M120 - 8



M120 - 9

#M121 SERIES

Raccord Droit 137cm / Straight Repeat 27cm



#M121 SERIES

APPLICATIONS

Wallcovering
Panel

COMPOSITIONS

84% PE
16% Polyester

WIDTH

137cm



M121 - 1

#M121 SERIES

APPLICATIONS

Wallcovering
Panel

COMPOSITIONS

84% PE
16% Polyester

WIDTH

137cm



M121 - 2



M121 - 3



M121 - 4



M121 - 5

#M121 SERIES

APPLICATIONS

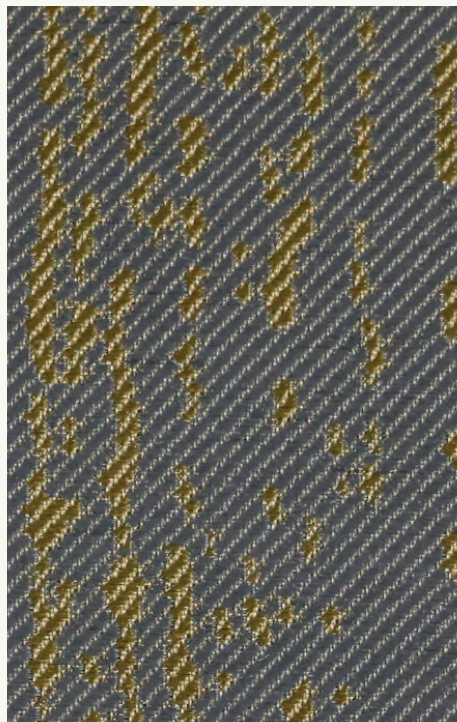
Wallcovering
Panel

COMPOSITIONS

84% PE
16% Polyester

WIDTH

137cm



M121 - 6



M121 - 7



M121 - 8



M121 - 9

#M122 SERIES

Raccord Droit 137cm / Straight Repeat 150cm



#M122 SERIES

APPLICATIONS

Wallcovering
Panel

COMPOSITIONS

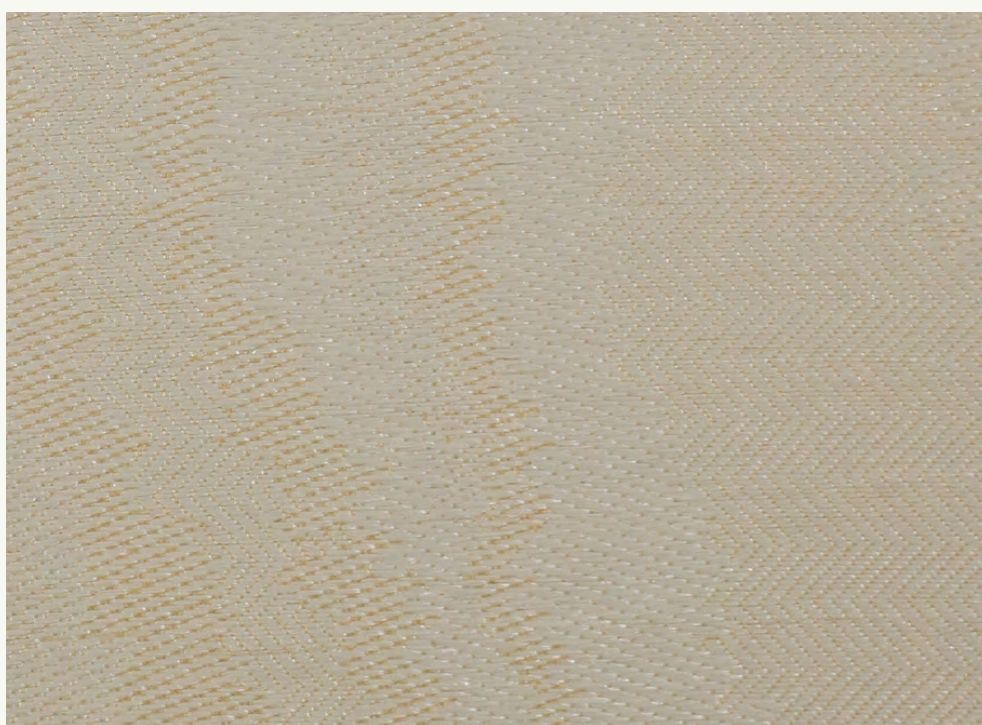
55% PE
45% Polyester

WIDTH

137cm



M122 - 1



M122 - 10

#M122 SERIES

APPLICATIONS

Wallcovering
Panel

COMPOSITIONS

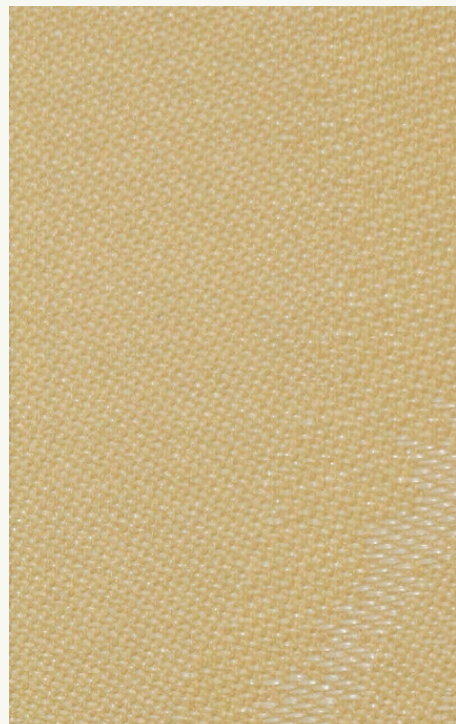
55% PE
45% Polyester

WIDTH

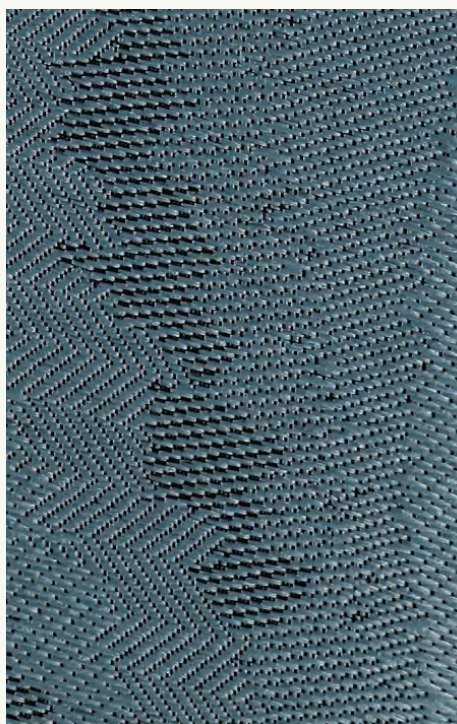
137cm



M122 - 2



M122 - 3



M122 - 4



M122 - 5

#M122 SERIES

APPLICATIONS

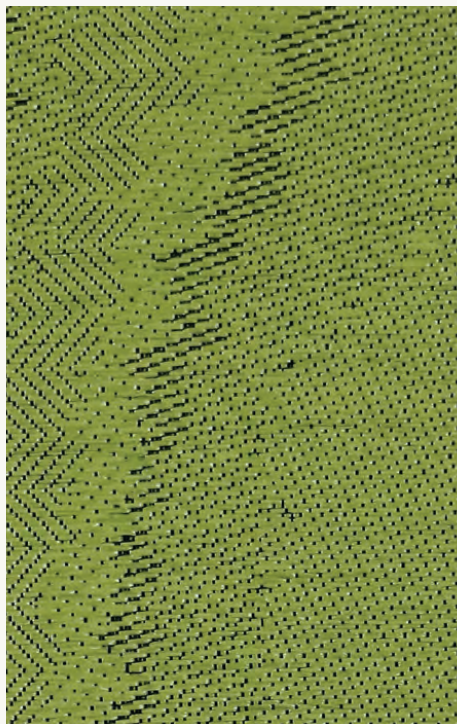
Wallcovering
Panel

COMPOSITIONS

55% PE
45% Polyester

WIDTH

137cm



M121 - 6



M121 - 7



M121 - 8



M121 - 9

#M123 SERIES

APPLICATIONS

Wallcovering
Panel

COMPOSITIONS

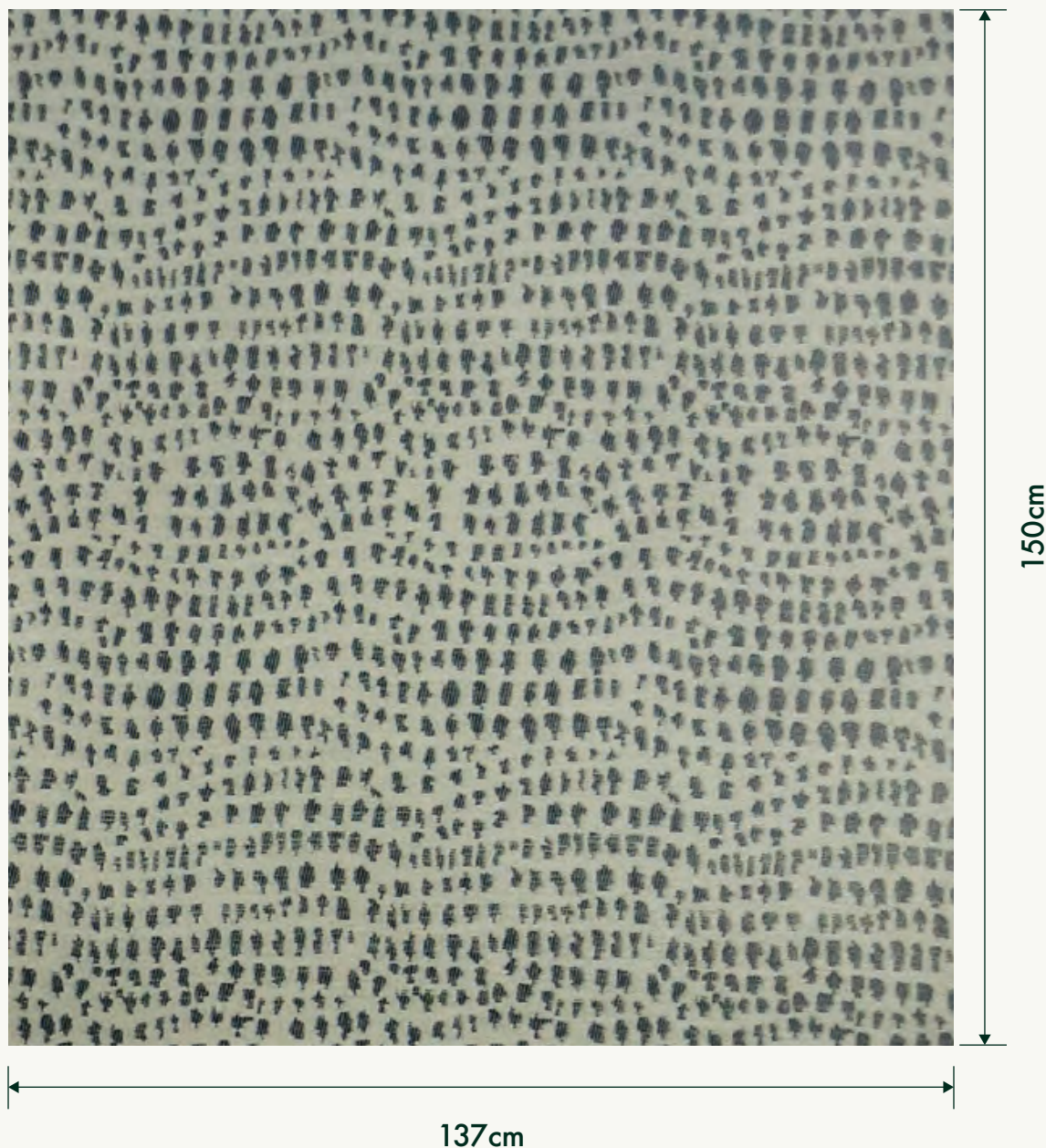
70% PE
30% Polyester

WIDTH

137 cm

#M123 SERIES

Raccord Droit 137cm / Straight Repeat 150cm



#M123 SERIES

APPLICATIONS

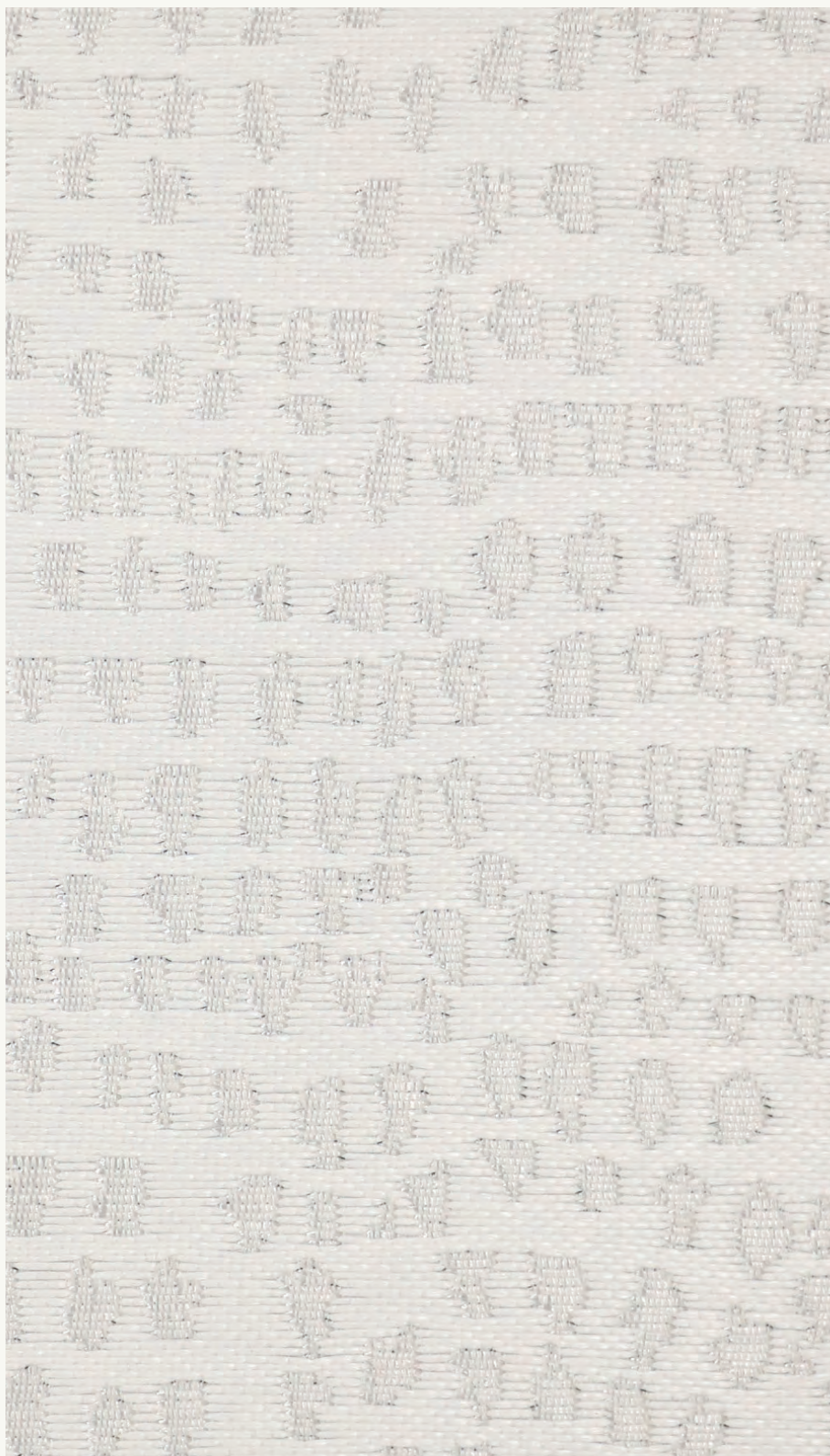
Wallcovering
Panel

COMPOSITIONS

70% PE
30% Polyester

WIDTH

137cm



M123 - 1

#M123 SERIES

APPLICATIONS

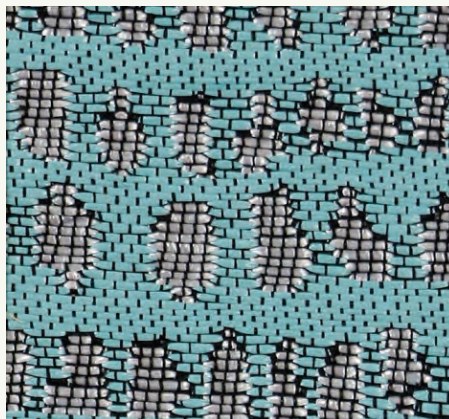
Wallcovering
Panel

COMPOSITIONS

70% PE
30% Polyester

WIDTH

137cm



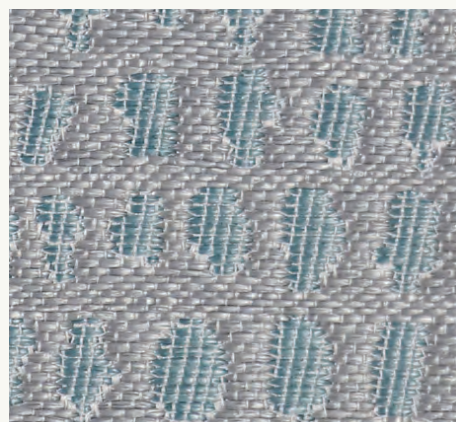
M123 - 2



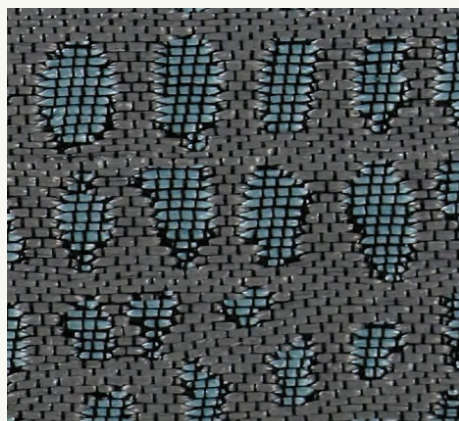
M123 - 3



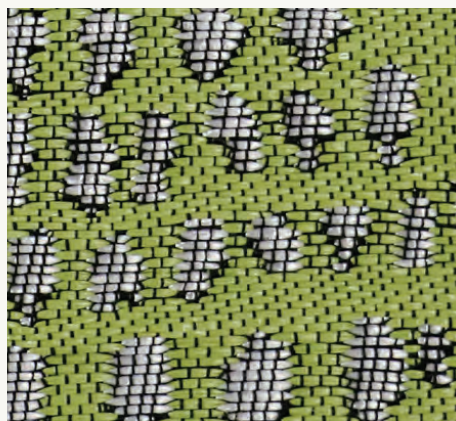
M123 - 4



M123 - 5



M123 - 6



M123 - 7

#M123 SERIES

APPLICATIONS

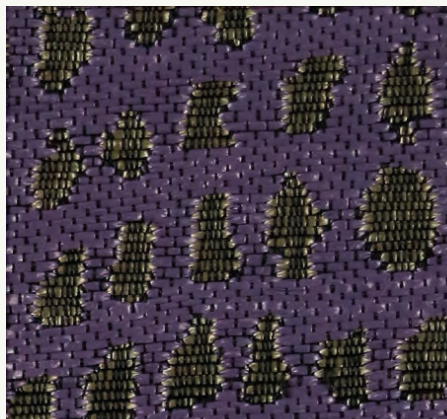
Wallcovering
Panel

COMPOSITIONS

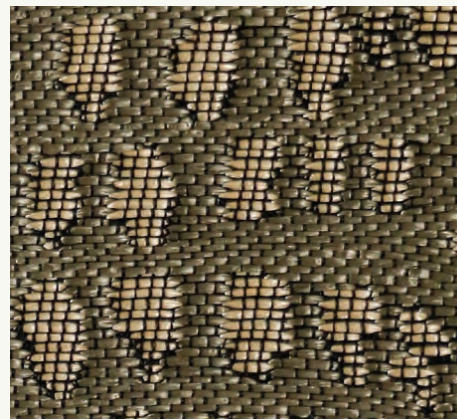
70% PE
30% Polyester

WIDTH

137cm



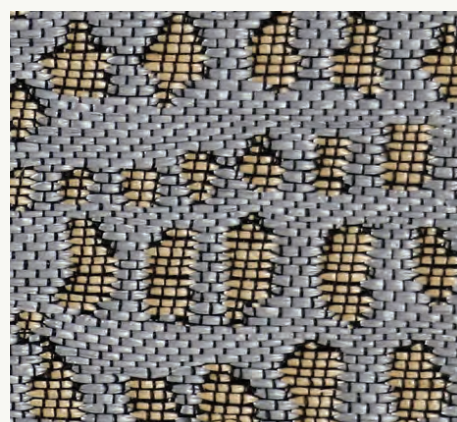
M123 - 8



M123 - 9



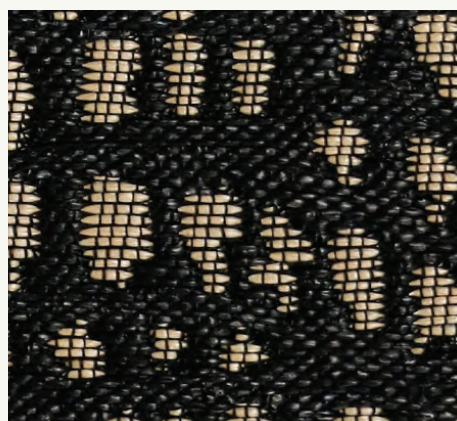
M123 - 10



M123 - 11



M123 - 12



M123 - 13

#M124 SERIES

APPLICATIONS

Wallcovering
Panel

COMPOSITIONS

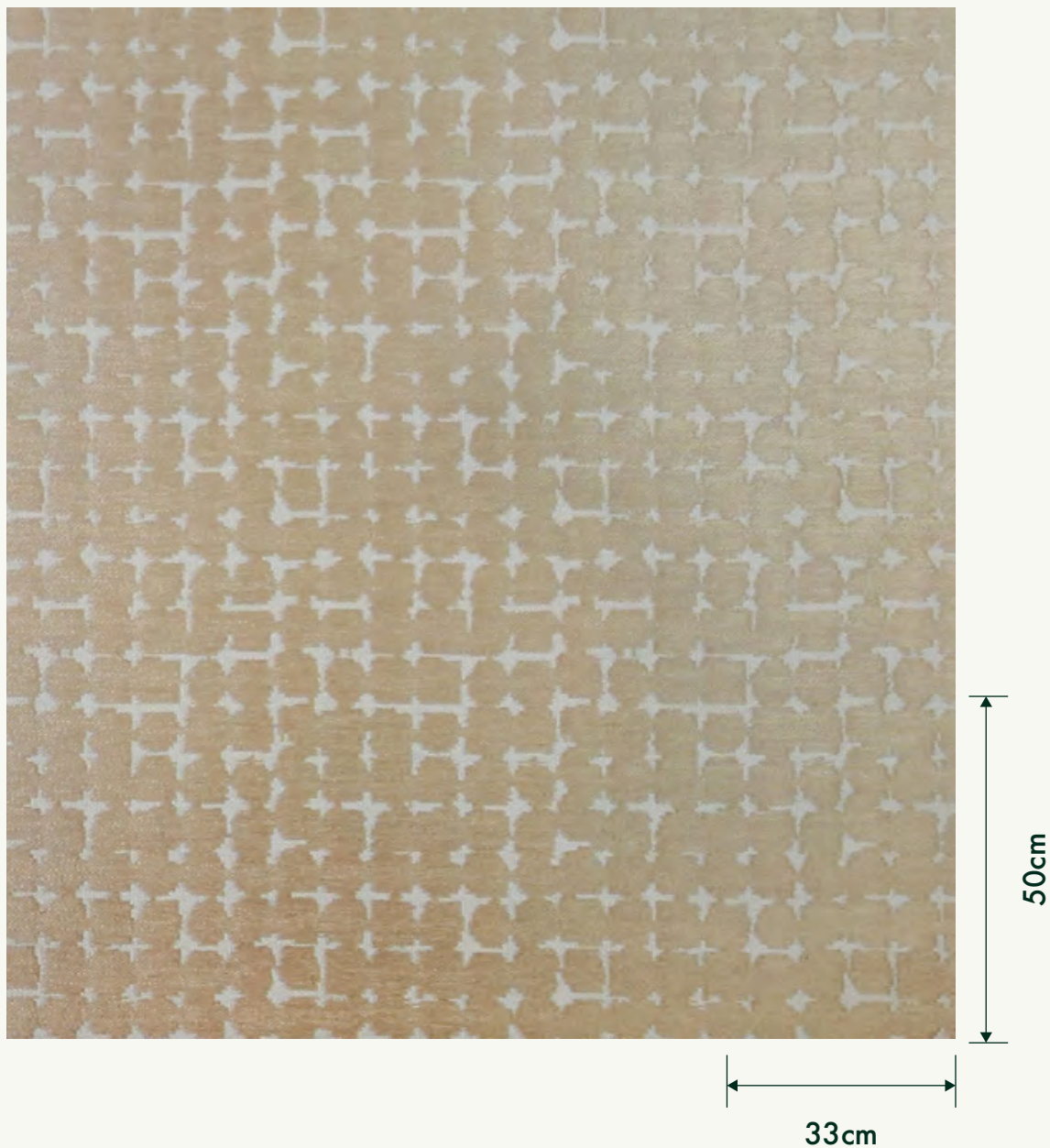
70% PE
30% Polyester

WIDTH

137cm

#M124 SERIES

Raccord Droit 37cm / Straight Repeat 50cm



#M124 SERIES

APPLICATIONS

Wallcovering
Panel

COMPOSITIONS

70% PE
30% Polyester

WIDTH

137cm



M124 - 1

#M124 SERIES

APPLICATIONS

Wallcovering
Panel

COMPOSITIONS

70% PE
30% Polyester

WIDTH

137cm



M124 - 1



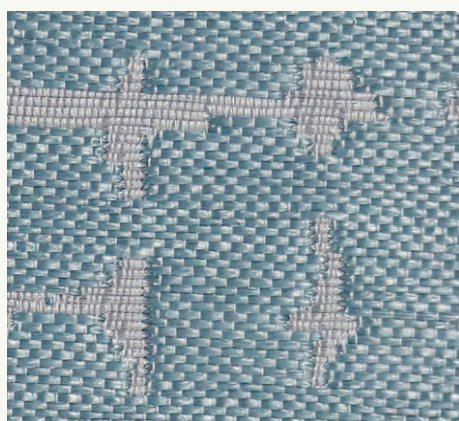
M124 - 2



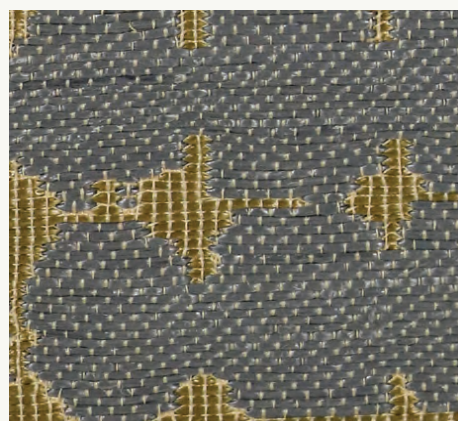
M124 - 3



M124 - 4



M124 - 5



M124 - 6

#M124 SERIES

APPLICATIONS

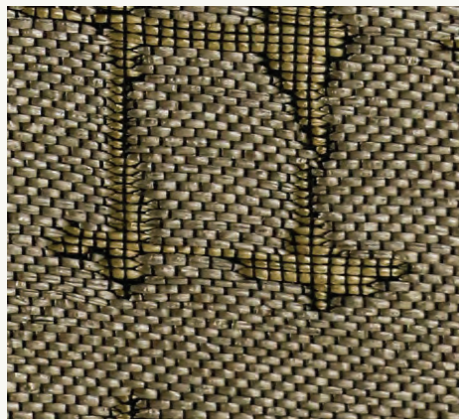
Wallcovering
Panel

COMPOSITIONS

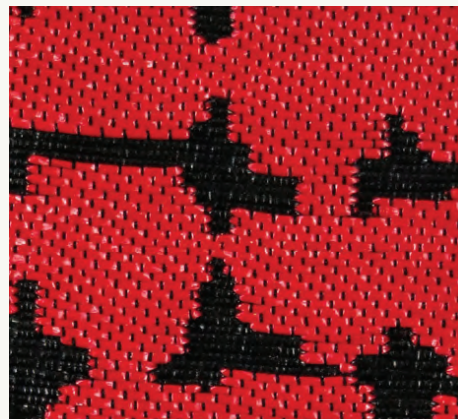
70% PE
30% Polyester

WIDTH

137cm



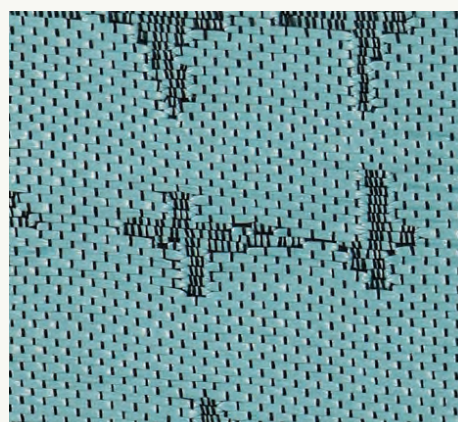
M124 - 7



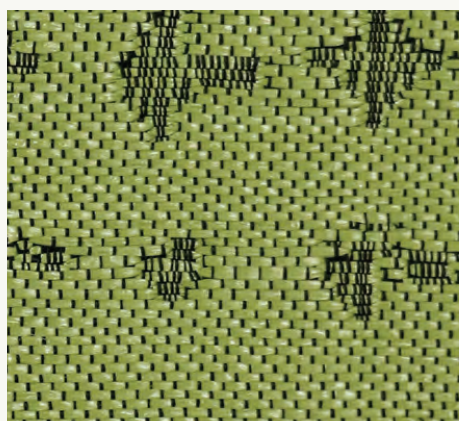
M124 - 8



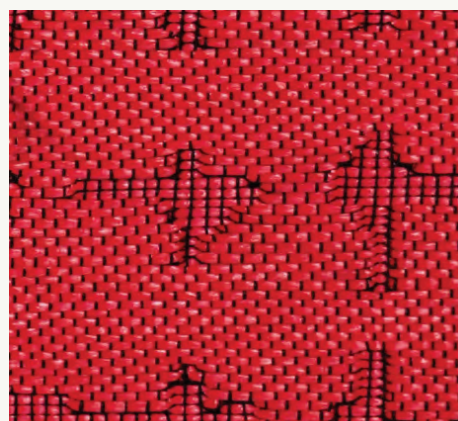
M124 - 9



M124 - 10



M124 - 11



M124 - 12

#M125 SERIES

APPLICATIONS

Wallcovering
Panel

COMPOSITIONS

70% PE
30% Polyester

WIDTH

137cm



#M125 SERIES

Raccord Droit 12cm / Straight Repeat 30cm



12cm

30cm

#M125 SERIES

APPLICATIONS

Wallcovering
Panel

COMPOSITIONS

70% PE
30% Polyester

WIDTH

137cm



M125 - 1

#M125 SERIES

APPLICATIONS

Wallcovering
Panel

COMPOSITIONS

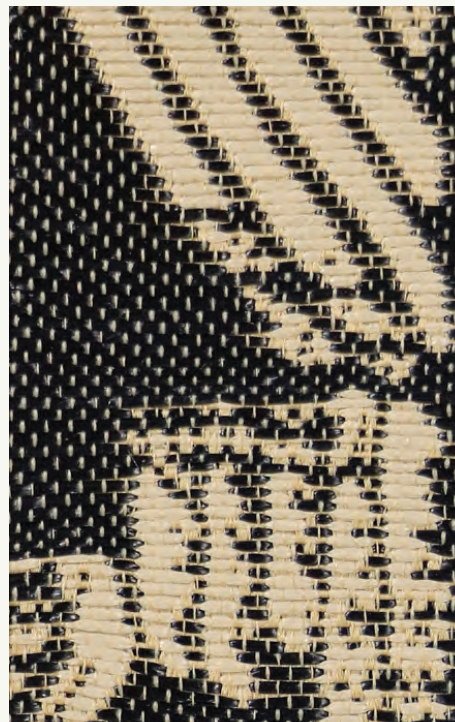
70% PE
30% Polyester

WIDTH

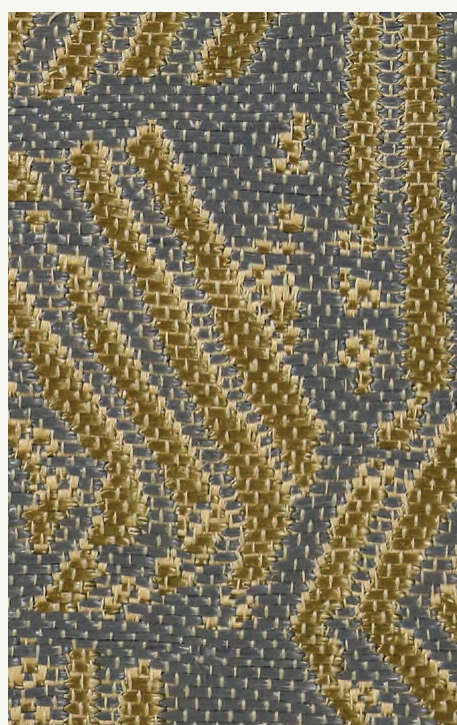
137cm



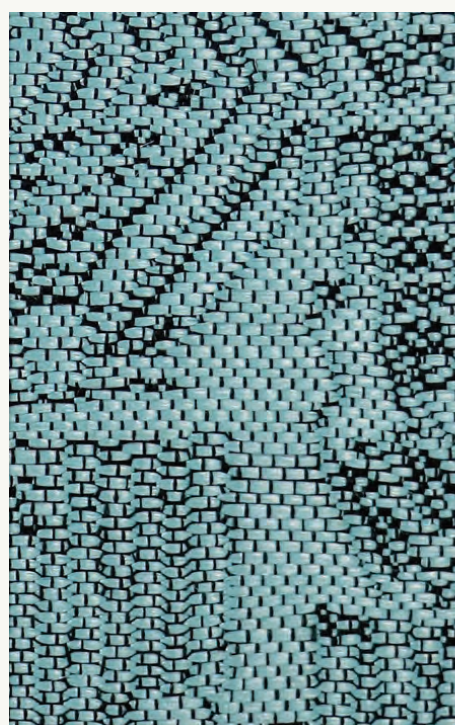
M125 - 1



M125 - 2



M125 - 4



M125 - 5

#M125 SERIES

APPLICATIONS

Wallcovering
Panel

COMPOSITIONS

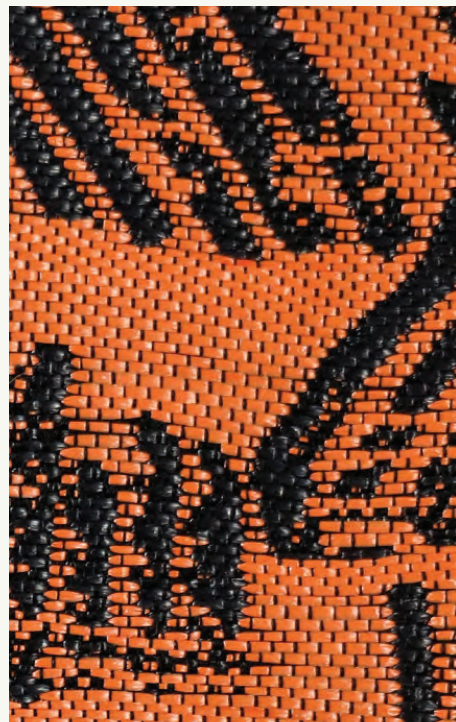
70% PE
30% Polyester

WIDTH

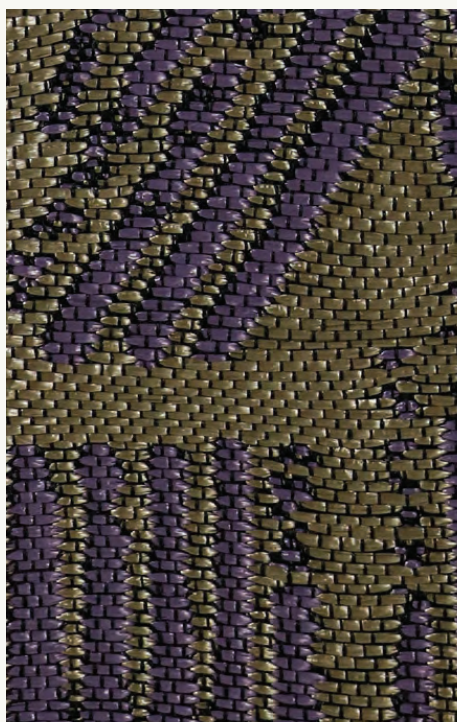
137cm



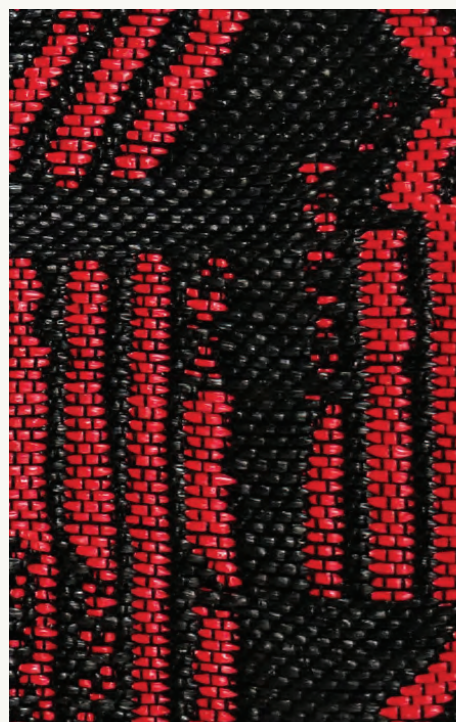
M125 - 6



M125 - 7



M125 - 8



M125 - 9

#M126 SERIES

APPLICATIONS

Wallcovering
Panel

COMPOSITIONS

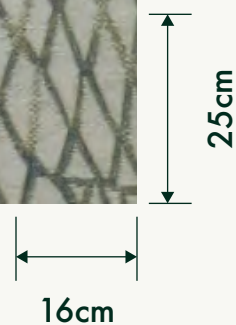
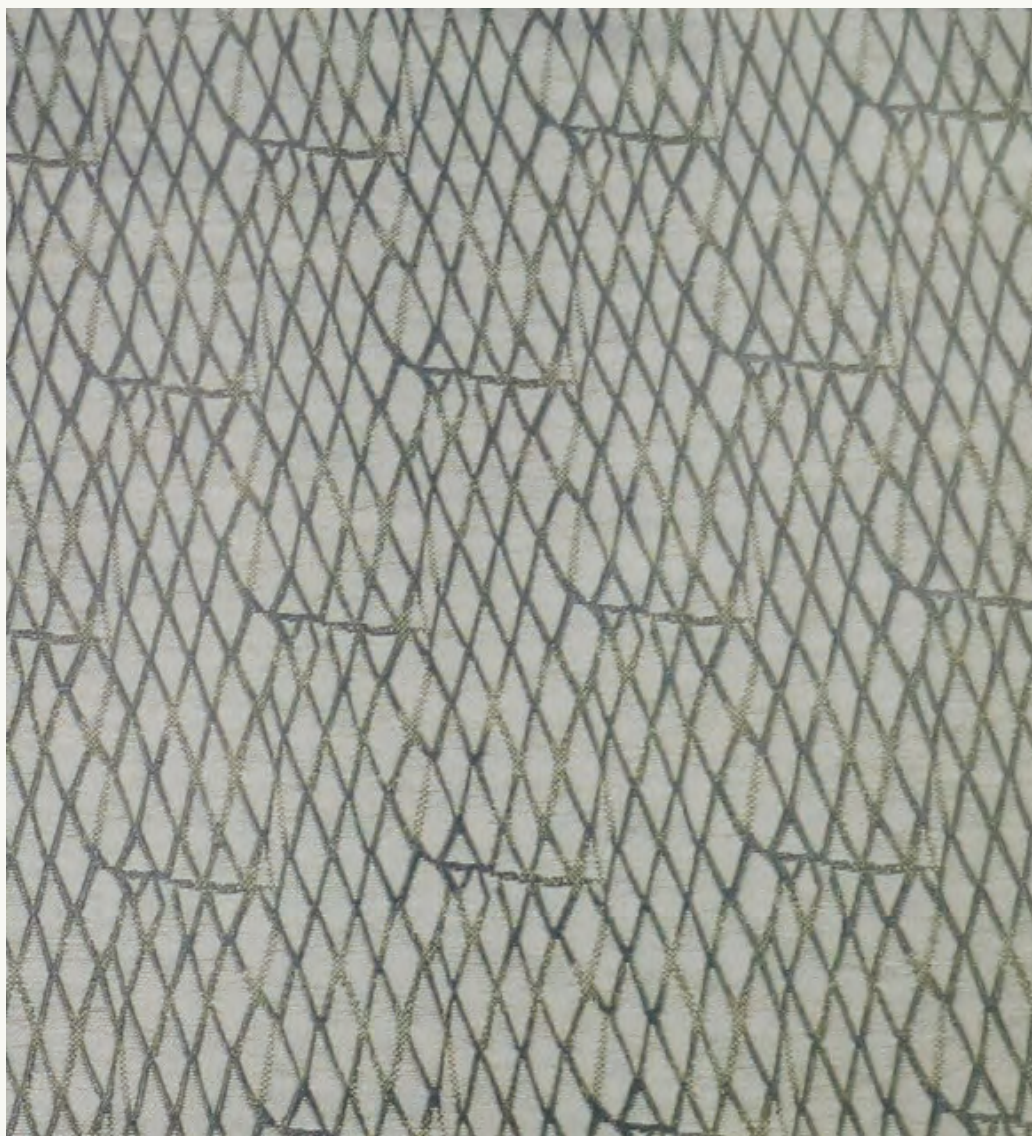
70% PE
30% Polyester

WIDTH

137cm

#M126 SERIES

Raccord Droit 16cm / Straight Repeat 25cm



#M126 SERIES

APPLICATIONS

Wallcovering
Panel

COMPOSITIONS

70% PE
30% Polyester

WIDTH

137cm



M126 - 1

#M126 SERIES

APPLICATIONS

Wallcovering
Panel

COMPOSITIONS

70% PE
30% Polyester

WIDTH

137cm



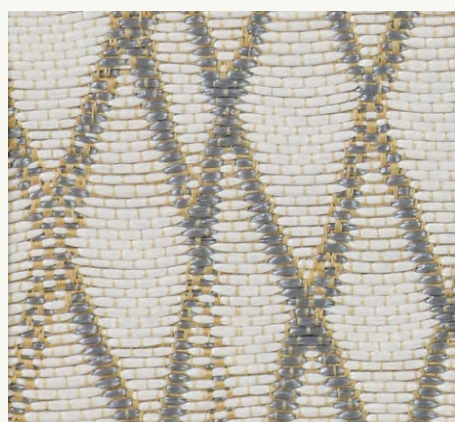
M118-1



M118-2



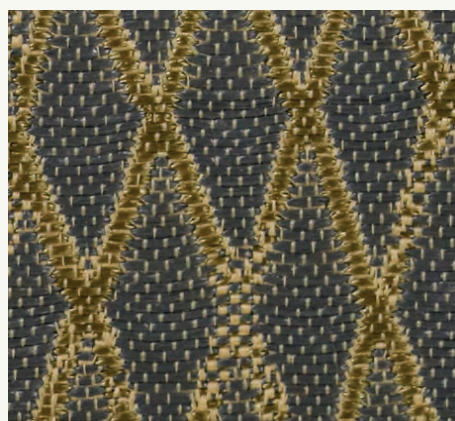
M126 - 3



M126 - 4



M126 - 5



M126 - 6

#M126 SERIES

APPLICATIONS

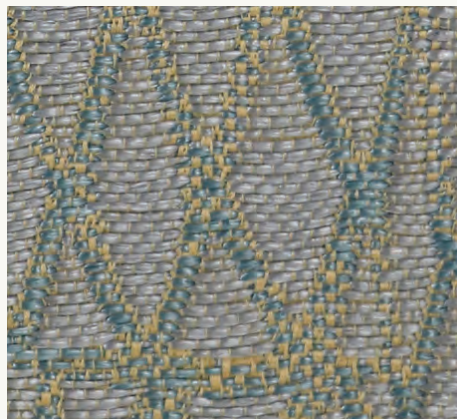
Wallcovering
Panel

COMPOSITIONS

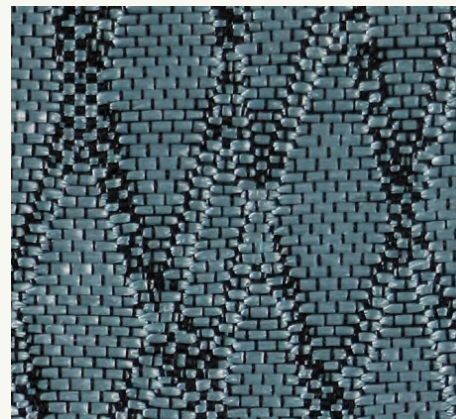
70% PE
30% Polyester

WIDTH

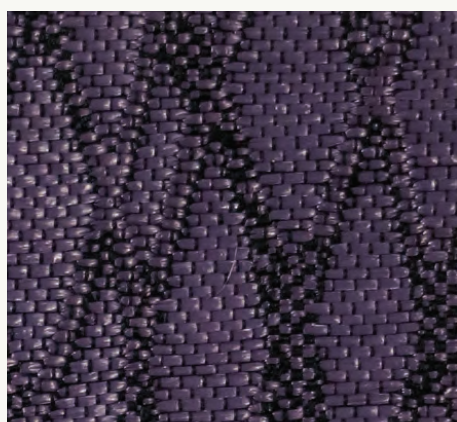
137cm



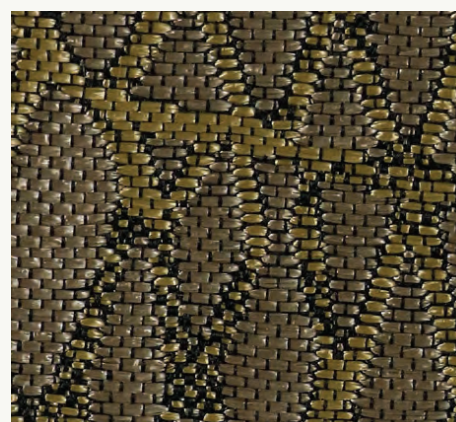
M126 - 7



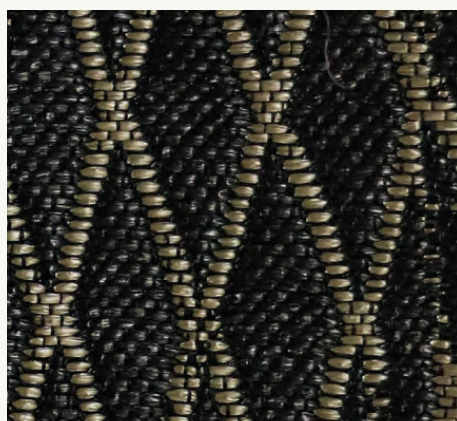
M126 - 8



M126 - 9



M126 - 10



M126 - 11



M126 - 12

#M127 SERIES

APPLICATIONS

Wallcovering
Panel

COMPOSITIONS

100% PE

WIDTH

137cm

#M127 SERIES

Raccord Droit 24cm / Straight Repeat 150cm



24cm

150cm

#M127 SERIES

APPLICATIONS

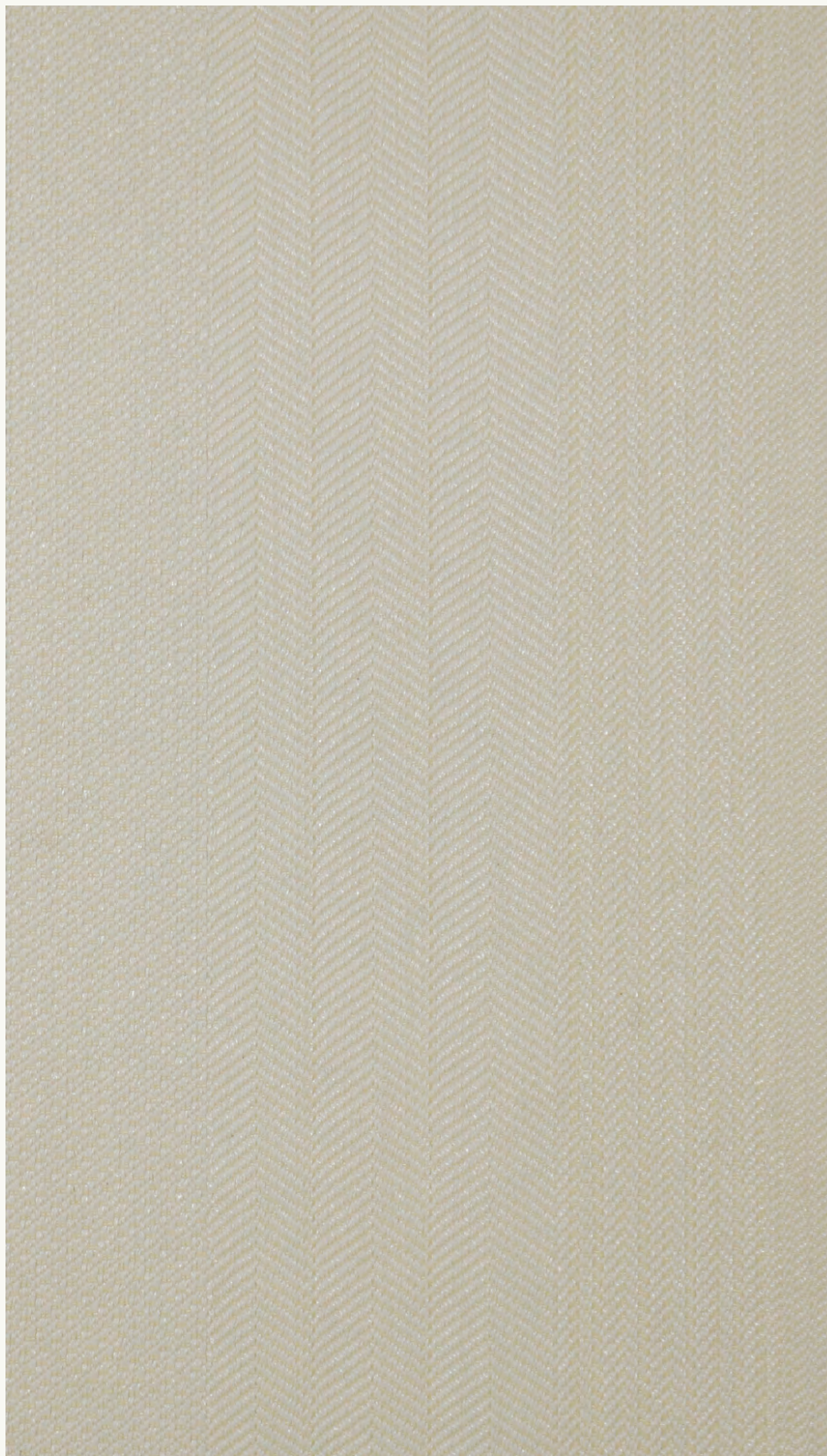
Wallcovering
Panel

COMPOSITIONS

100% PE

WIDTH

137cm



M127 - 1

#M127 SERIES

APPLICATIONS

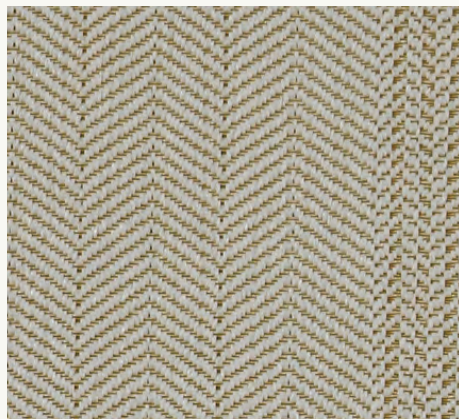
Wallcovering
Panels

COMPOSITIONS

100% PE

WIDTH

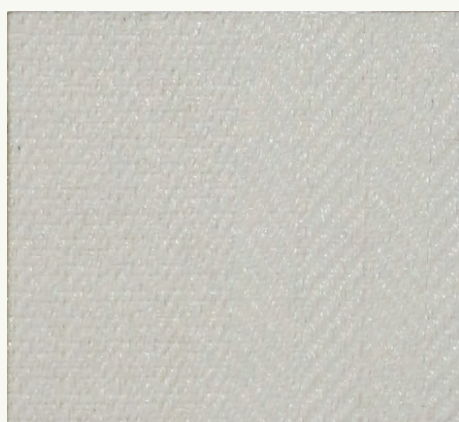
137cm



M127 - 2



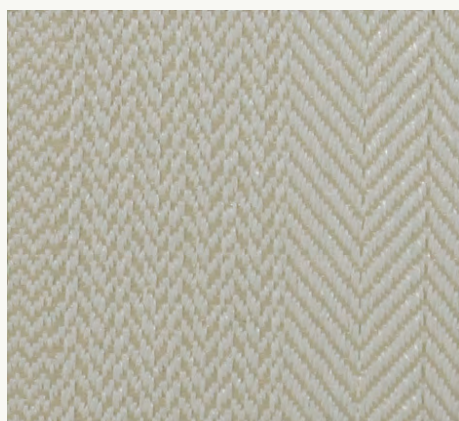
M127 - 3



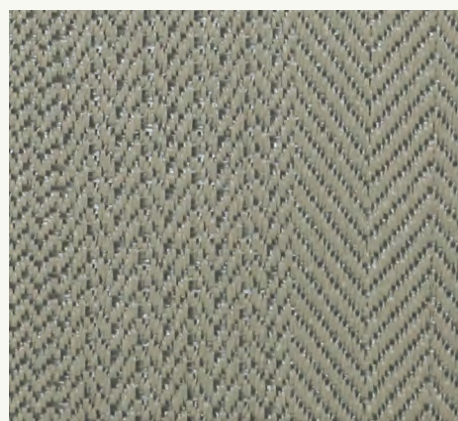
M127 - 4



M127 - 5



M127 - 6



M127 - 7

#M127 SERIES

APPLICATIONS

Wallcovering
Panel

COMPOSITIONS

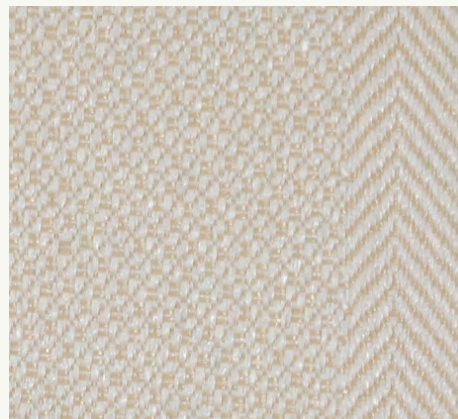
100% PE

WIDTH

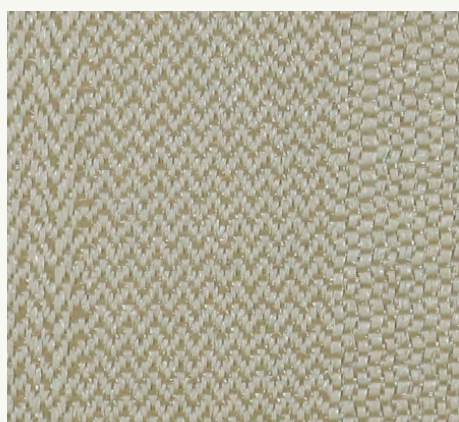
137cm



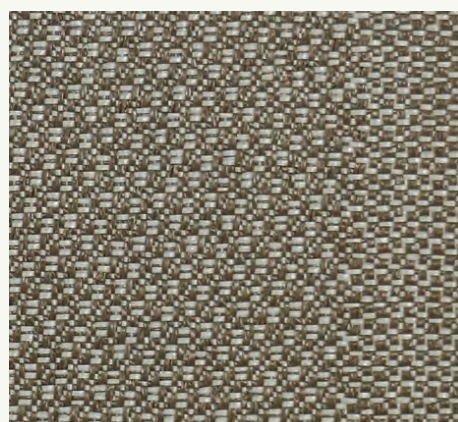
M127 - 8



M127 - 9



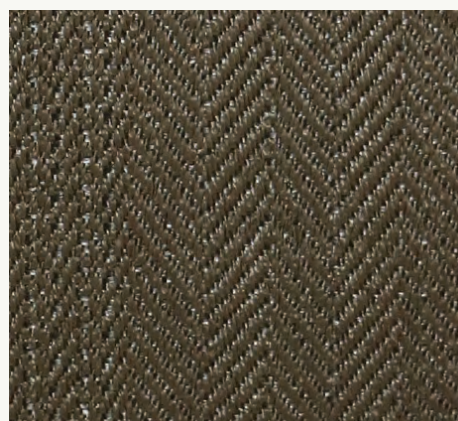
M127 - 10



M127 - 11



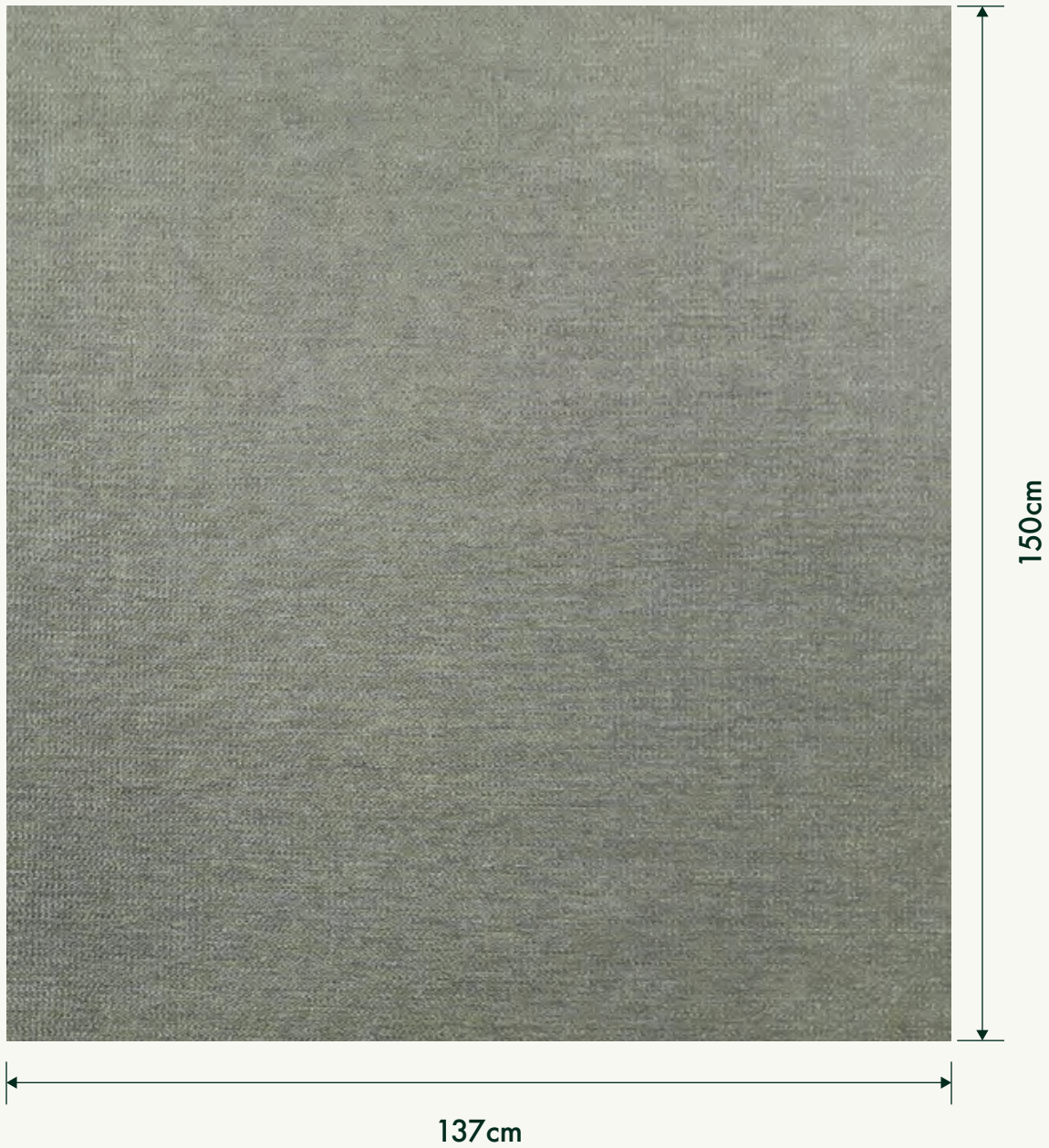
M127 - 12



M127 - 13

#M128 SERIES

Raccord Droit 137cm / Straight Repeat 150cm



#M128 SERIES

APPLICATIONS

Wallcovering
Panel

COMPOSITIONS

55% PE
45% Polyester

WIDTH

137cm



M128 - 1

#M128 SERIES

APPLICATIONS

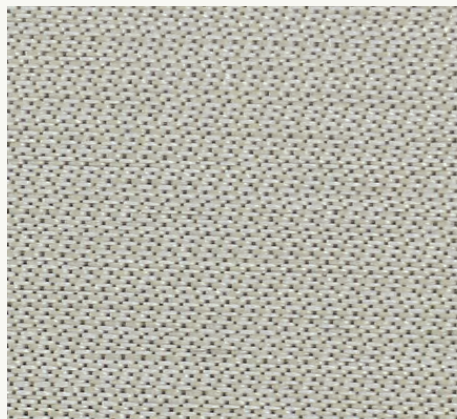
Wallcovering
Panel

COMPOSITIONS

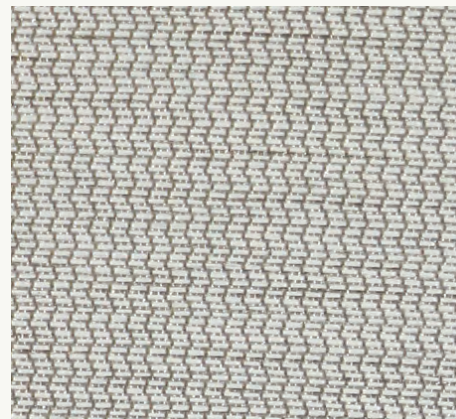
55% PE
45% Polyester

WIDTH

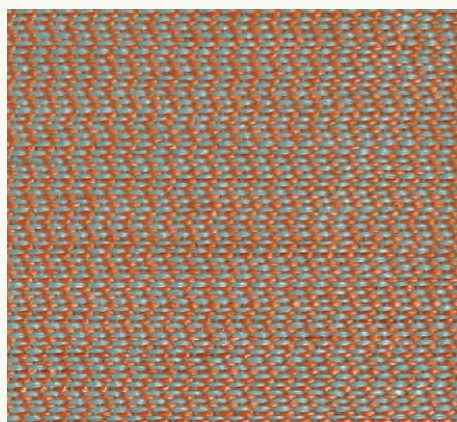
137cm



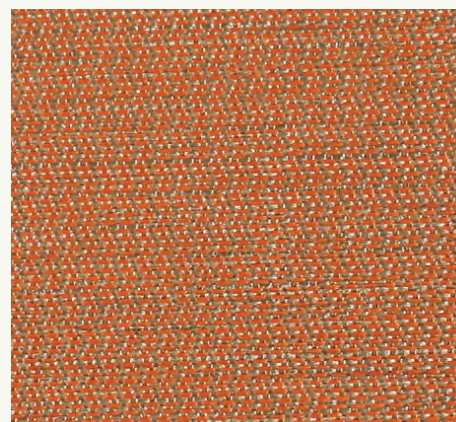
M128 - 1



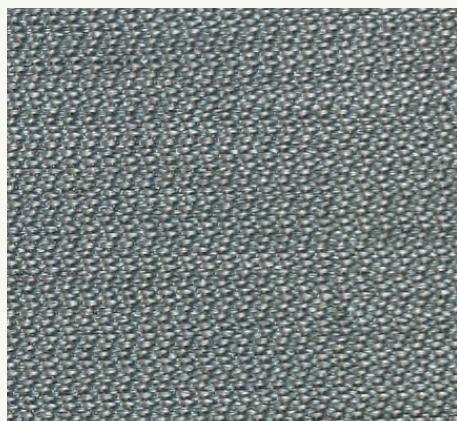
M128 - 2



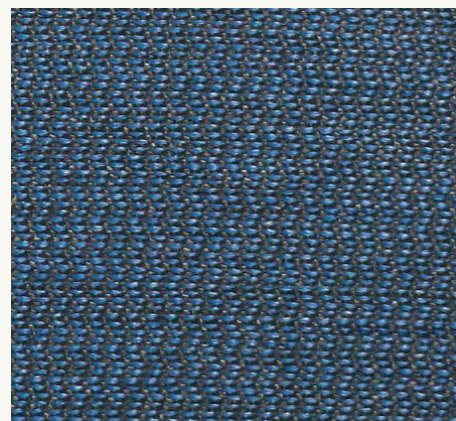
M128 - 3



M128 - 4



M128 - 5



M128 - 6

#M128 SERIES

APPLICATIONS

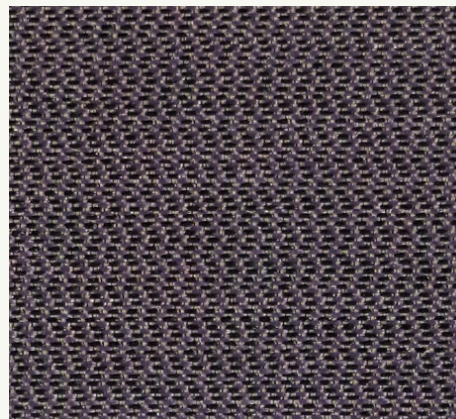
Wallcovering
Panel

COMPOSITIONS

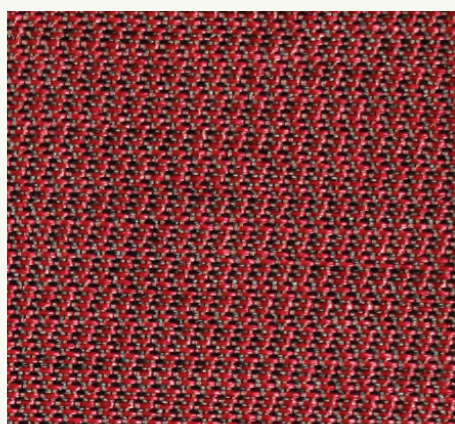
55% PE
45% Polyester

WIDTH

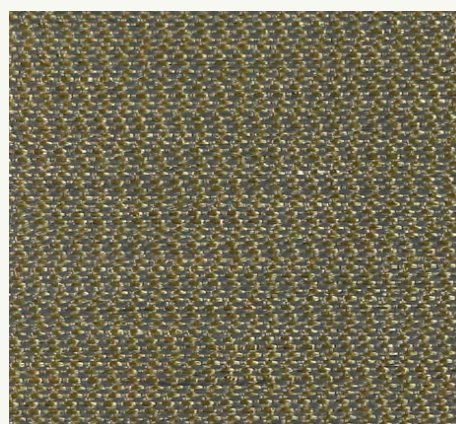
137cm



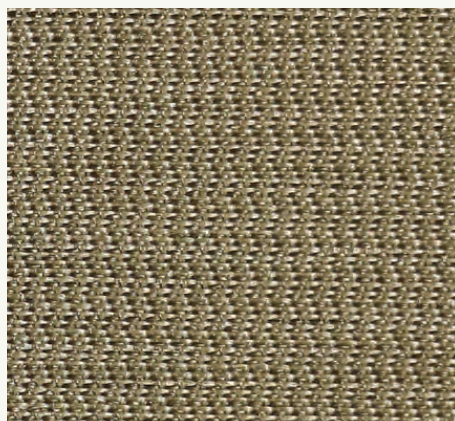
M128 - 7



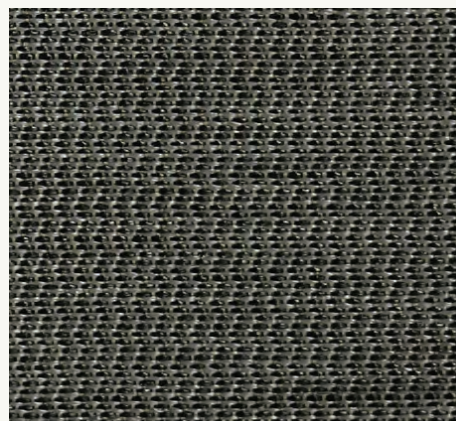
M128 - 8



M128 - 9



M128 - 10



M128 - 11

#M129 SERIES

APPLICATIONS

Wallcovering
Panel

COMPOSITIONS

35% PE
65% Polyester

WIDTH

137cm



M129 - 1

#M129 SERIES

APPLICATIONS

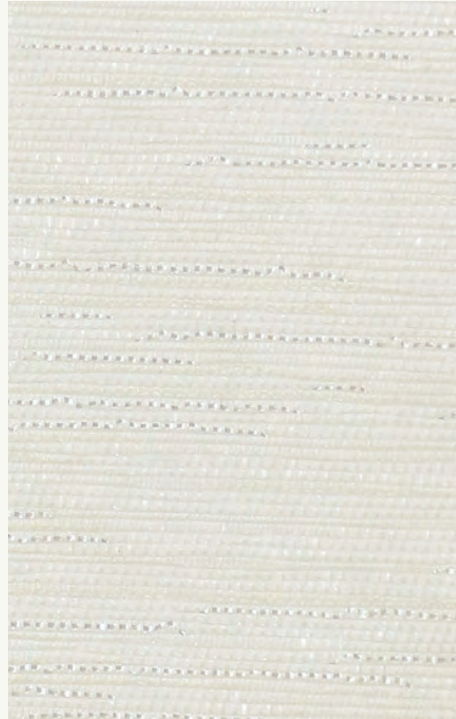
Wallcovering
Panel

COMPOSITIONS

35% PE
65% Polyester

WIDTH

137cm



M129 - 1



M129 - 2



M129 - 3



M129 - 4

#M129 SERIES

APPLICATIONS

Wallcovering
Panel

COMPOSITIONS

35% PE
65% Polyester

WIDTH

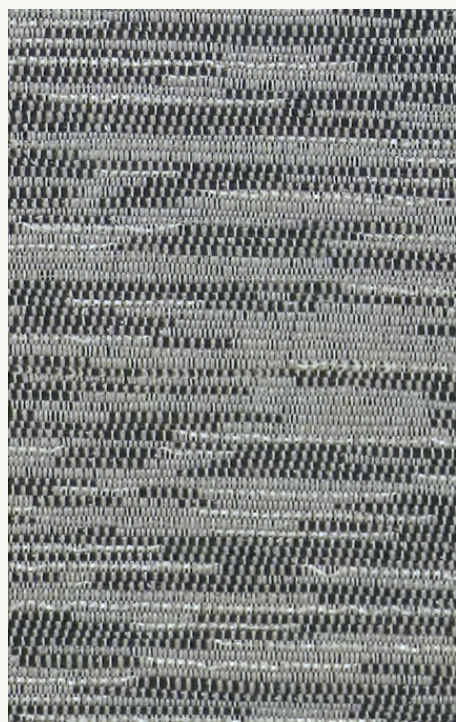
137cm



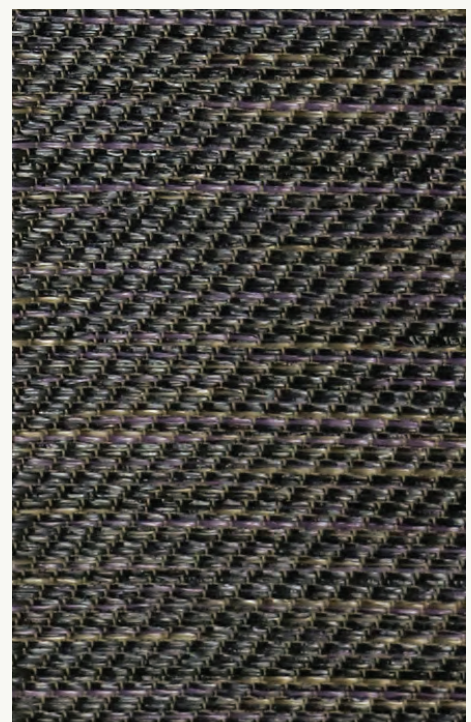
M129 - 5



M129 - 6



M129 - 7



M125 - 8

#M130 SERIES

APPLICATIONS

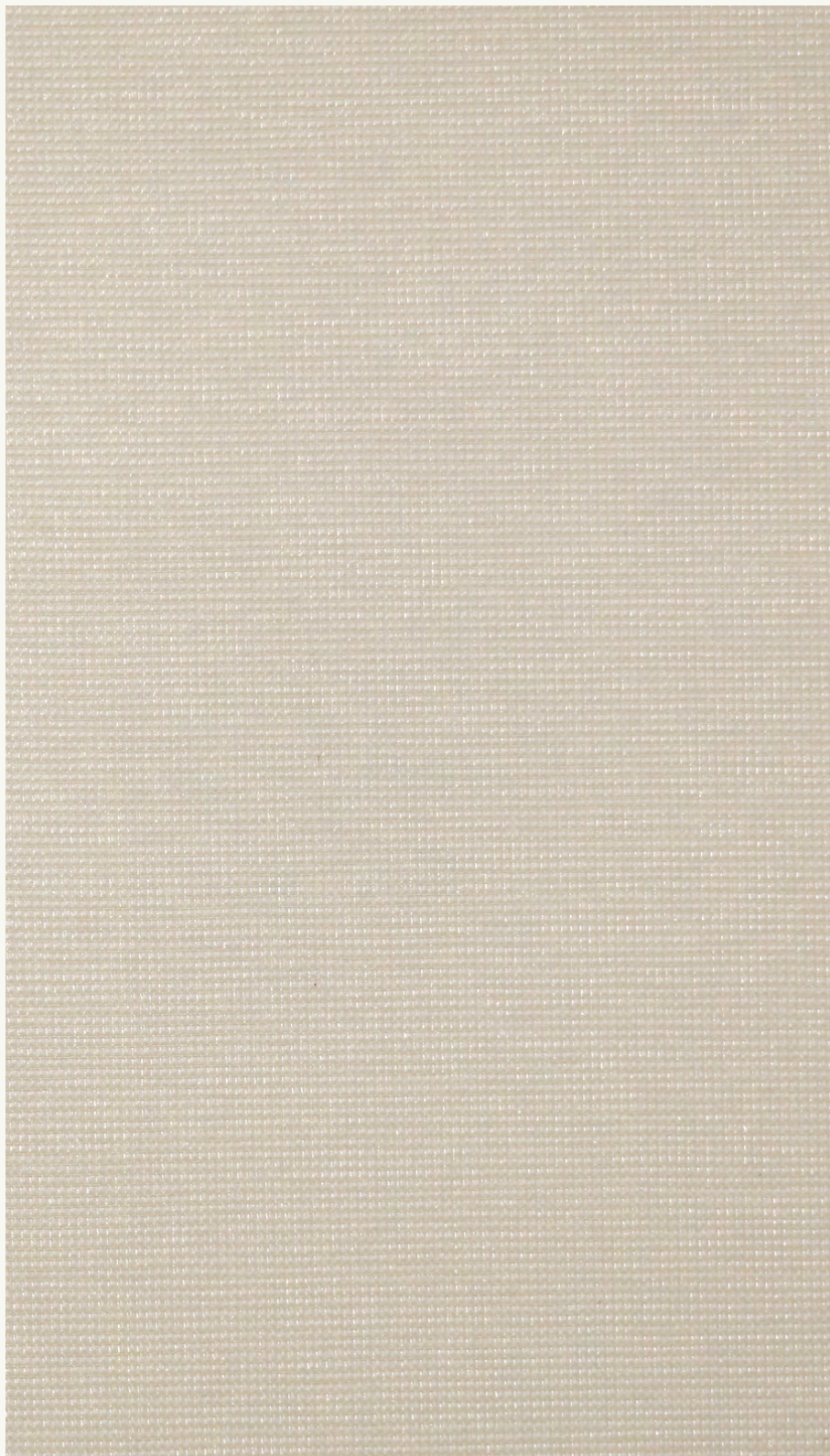
Wallcovering
Panel

COMPOSITIONS

58% PE
42% Polyester

WIDTH

137cm



M130 - 1

#M130 SERIES

APPLICATIONS

Wallcovering
Panel

COMPOSITIONS

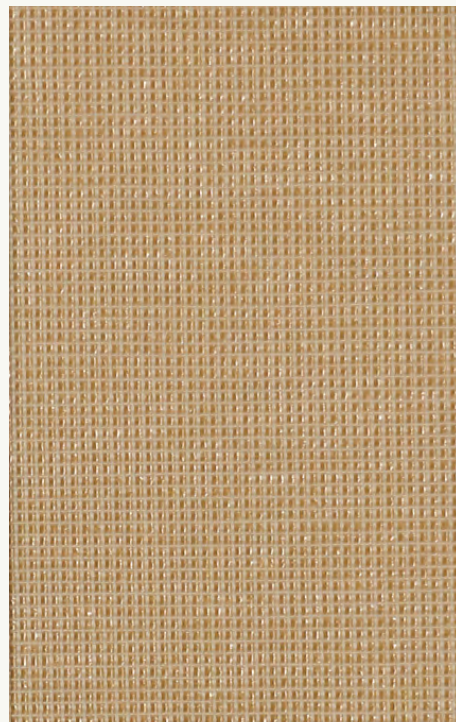
58% PE
42% Polyester

WIDTH

137cm



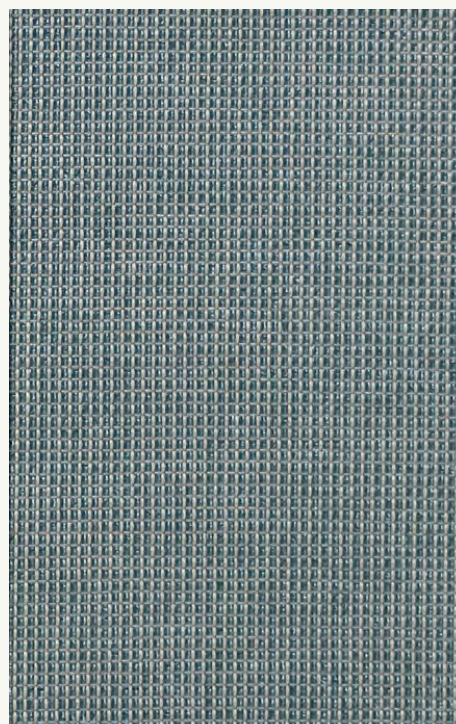
M130 - 2



M130 - 3



M130 - 4



M130 - 5

#M130 SERIES

APPLICATIONS

Wallcovering
Panel

COMPOSITIONS

58% PE
42% Polyester

WIDTH

137cm



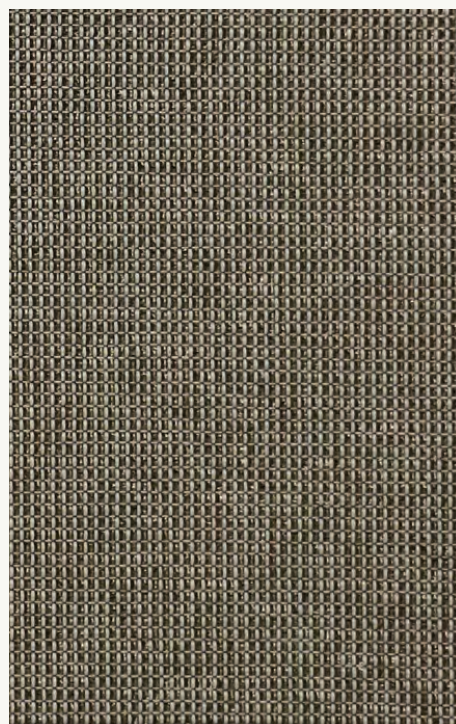
M130 - 6



M130 - 7



M130 - 8



M130 - 9

#M131 SERIES

APPLICATIONS

Wallcovering
Panel

COMPOSITIONS

58% PE
42% Polyester

WIDTH

137cm

#M131 SERIES

APPLICATIONS

Wallcovering
Panel

COMPOSITIONS

58% PE
42% Polyester

WIDTH

137cm



M131 - 1

#M131 SERIES

APPLICATIONS

Wallcovering
Panel

COMPOSITIONS

58% PE
42% Polyester

WIDTH

137cm



M131 - 1



M131 - 2



M131 - 3



M131 - 4

#M131 SERIES

APPLICATIONS

Wallcovering
Panel

COMPOSITIONS

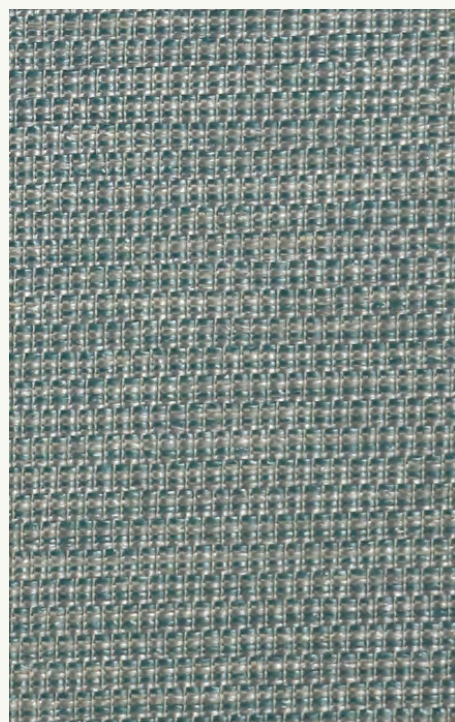
58% PE
42% Polyester

WIDTH

137cm



M131 - 5



M131 - 6

#ZX SERIES

APPLICATIONS

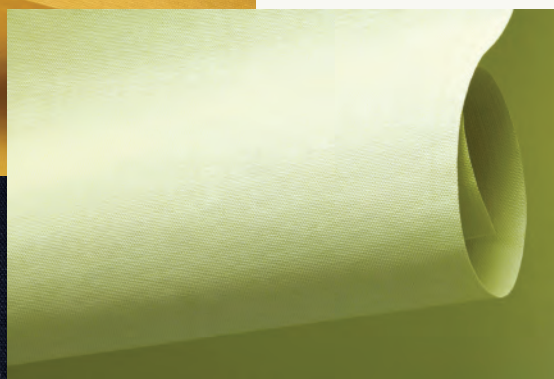
Upholstery
Wallcovering
Panel

COMPOSITIONS

100% PE

WIDTH

137cm



#ZX SERIES

APPLICATIONS

Upholstery
Wallcovering
Panel

COMPOSITIONS

100% PE

WIDTH

137cm



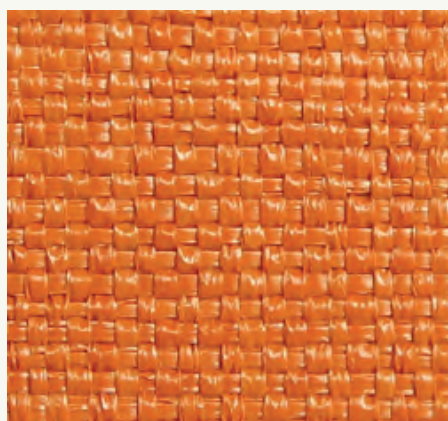
ZX - 01



ZX - 03



ZX - 04



ZX - 42

#ZX SERIES

APPLICATIONS

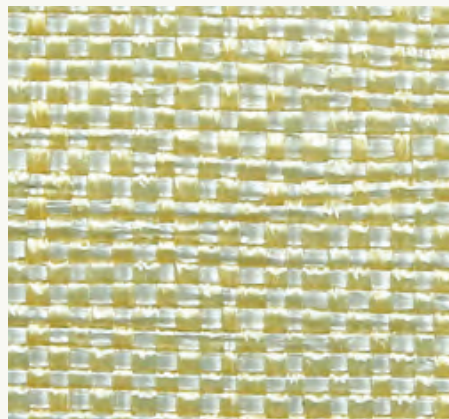
Upholstery
Wallcovering
Panel

COMPOSITIONS

100% PE

WIDTH

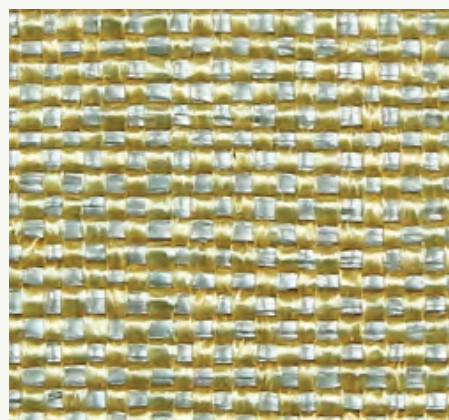
137cm



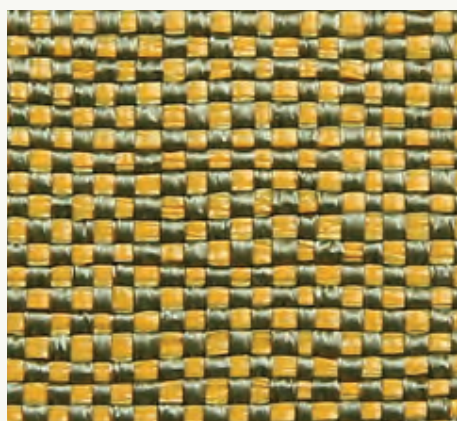
ZX - 60



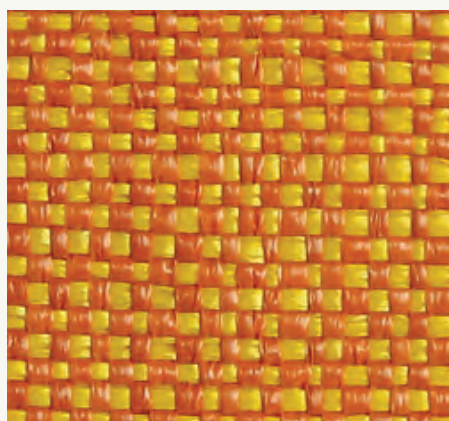
ZX - 19



ZX - 18



ZX - 56



ZX - 06

#ZX SERIES

APPLICATIONS

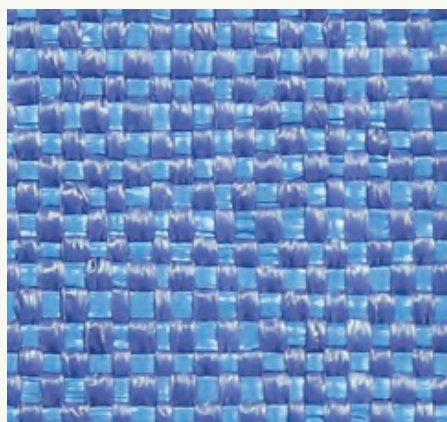
Upholstery
Wallcovering
Panel

COMPOSITIONS

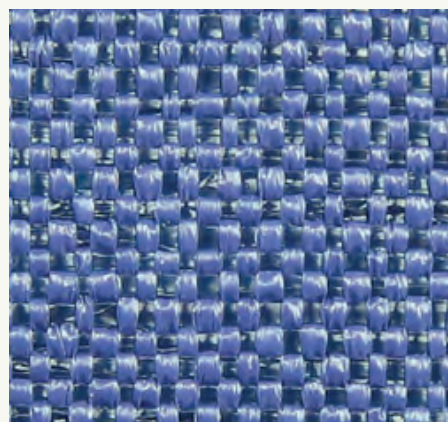
100% PE

WIDTH

137cm



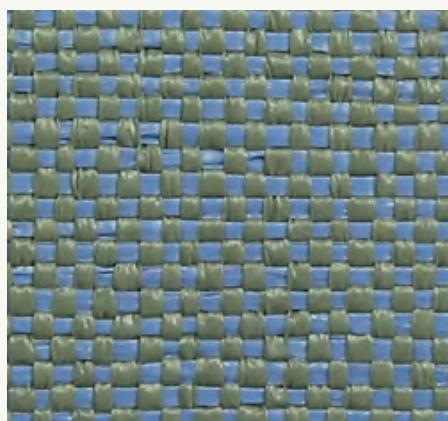
ZX - 23



ZX - 21



ZX - 27



ZX - 29

#ZX SERIES

APPLICATIONS

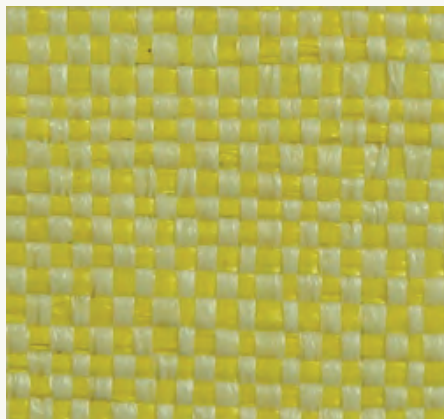
Upholstery
Wallcovering
Panel

COMPOSITIONS

100% PE

WIDTH

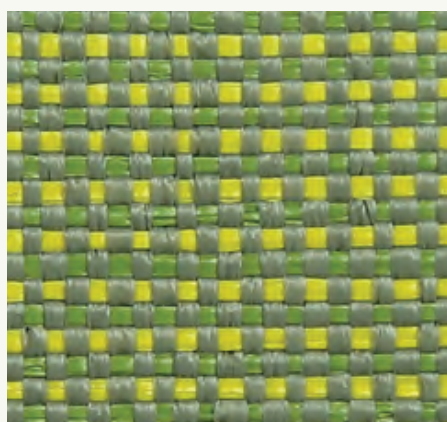
137cm



ZX - 53



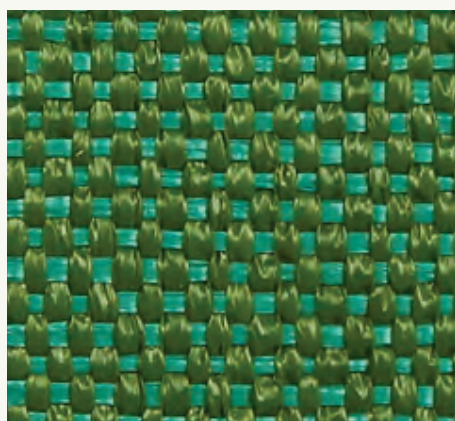
ZX - 54



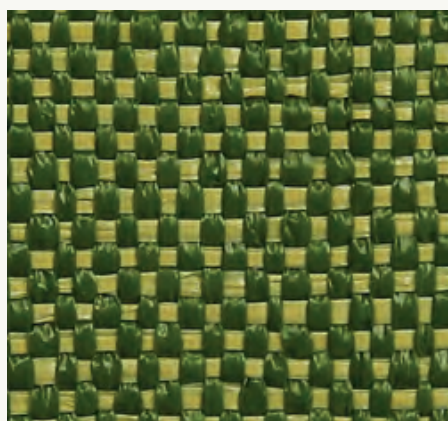
ZX - 52



ZX - 55



ZX - 38



ZX - 20

#ZX SERIES

APPLICATIONS

Upholstery
Wallcovering
Panel

COMPOSITIONS

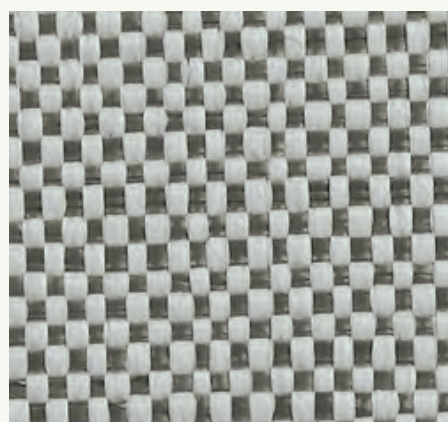
100% PE

WIDTH

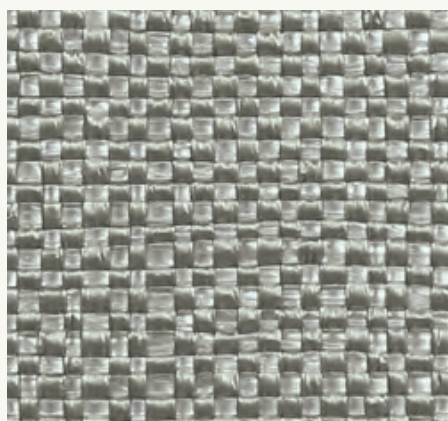
137cm



ZX - 70



ZX - 72



ZX - 69

#G1 SERIES

APPLICATIONS

Upholstery
Wallcovering
Panel

COMPOSITIONS

84% PE
16% Polyester

WIDTH

137cm



#G1 SERIES

APPLICATIONS

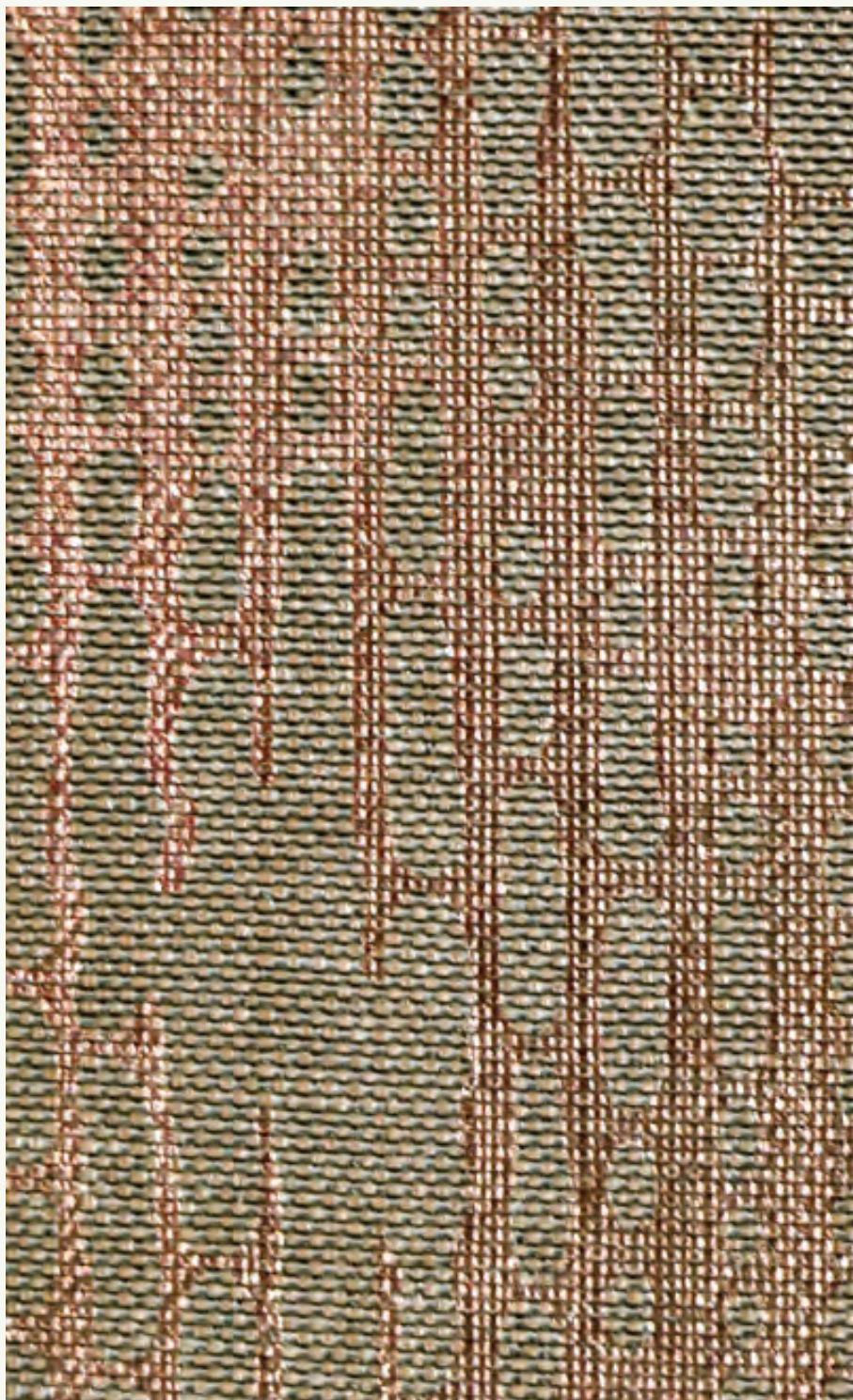
Upholstery
Wallcovering
Panel

COMPOSITIONS

84% PE
16% Polyester

WIDTH

137cm



G1 - 01

#G1 SERIES

APPLICATIONS

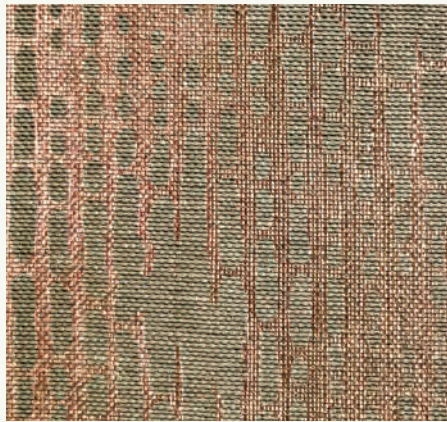
Upholstery
Wallcovering
Panel

COMPOSITIONS

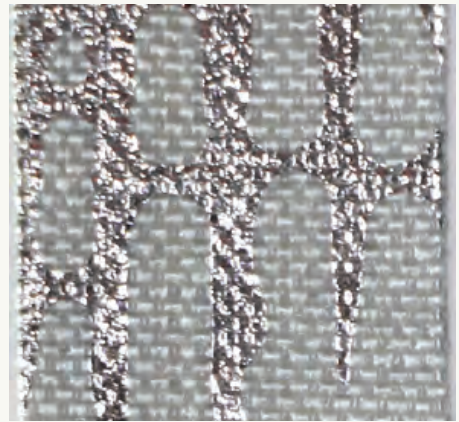
84% PE
16% Polyester

WIDTH

137cm



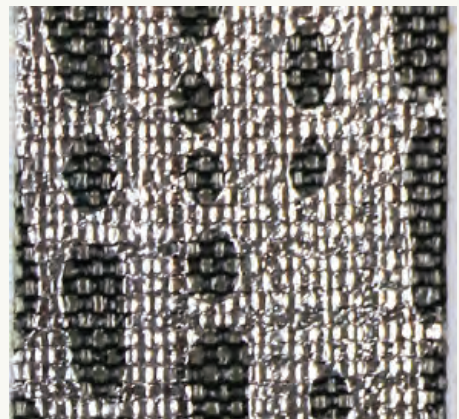
G1 - 01



G1 - 02



G1 - 03



G1 - 04

#G1 SERIES

APPLICATIONS

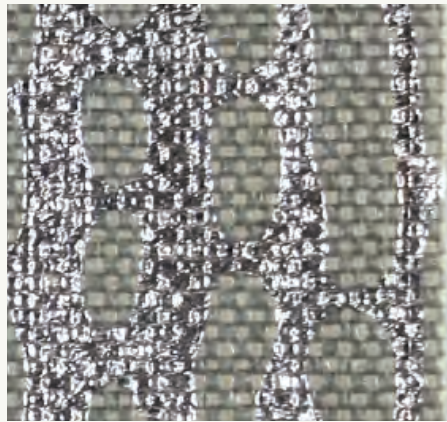
Upholstery
Wallcovering
Panel

COMPOSITIONS

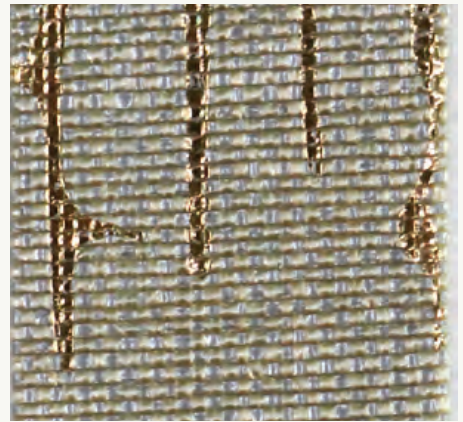
84% PE
16% Polyester

WIDTH

137cm



G1 - 05



G1 - 06



G1 - 07



G1 - 08

#G1 SERIES REFERENCES

APPLICATIONS

Wallcovering
Panel

COMPOSITIONS

84% PE
16% Polyester

WIDTH

137cm



#G1 SERIES BESPOKE

APPLICATIONS

Hotel Supplies

COMPOSITIONS

84% PE

16% Polyester

WIDTH

137cm



#G2 SERIES

APPLICATIONS

Upholstery
Wallcovering
Panel

COMPOSITIONS

84% PE
16% Polyester

WIDTH

137 cm



#G2 SERIES

APPLICATIONS

Upholstery
Wallcovering
Panel

COMPOSITIONS

84% PE
16% Polyester

WIDTH

137cm



#G2 SERIES

APPLICATIONS

Upholstery
Wallcovering
Panel

COMPOSITIONS

84% PE
16% Polyester

WIDTH

137cm



G2 - 01



G2 - 02



G2 - 03



G2 - 04

#G2 SERIES

APPLICATIONS

Upholstery
Wallcovering
Panel

COMPOSITIONS

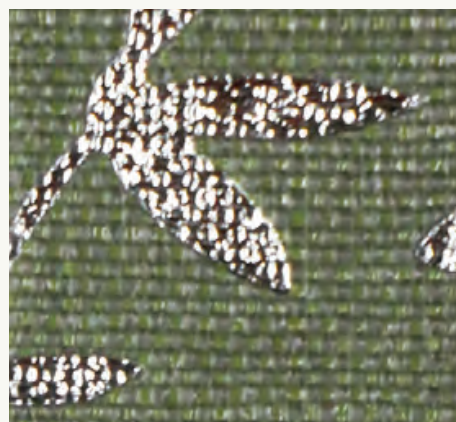
84% PE
16% Polyester

WIDTH

137cm



G2 - 05



G2 - 06



G2 - 07



G2 - 08

#G3 SERIES

APPLICATIONS

Upholstery
Wallcovering
Panel

COMPOSITIONS

84% PE
16% Polyester

WIDTH

137cm

#G3 SERIES

APPLICATIONS

Upholstery
Wallcovering
Panel

COMPOSITIONS

84% PE
16% Polyester

WIDTH

137cm



#G3 SERIES

APPLICATIONS

Upholstery
Wallcovering
Panel

COMPOSITIONS

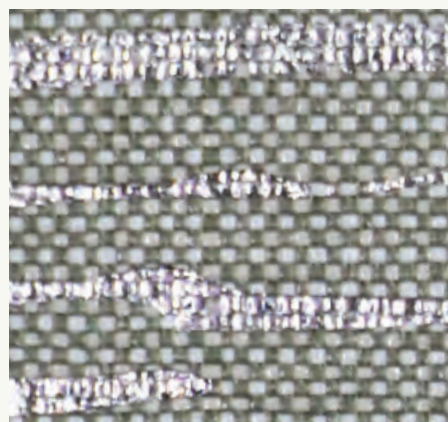
84% PE
16% Polyester

WIDTH

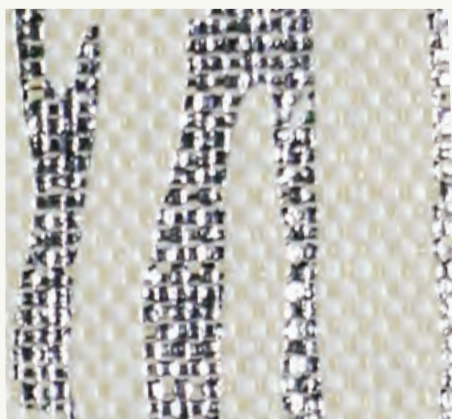
137cm



G3 - 01



G3 - 02



G3 - 03



G3 - 04

#G3 SERIES

APPLICATIONS

Upholstery
Wallcovering
Panel

COMPOSITIONS

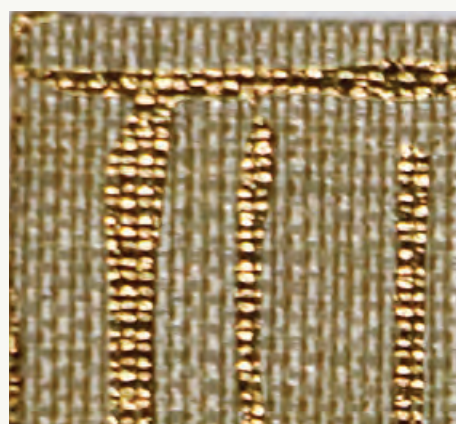
84% PE
16% Polyester

WIDTH

137cm



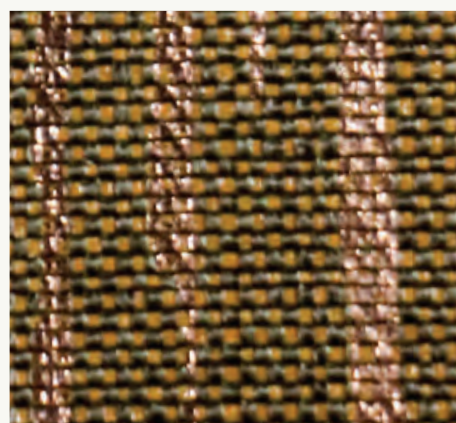
G3 - 05



G3 - 06



G3 - 07



G3 - 08

#G4 SERIES

APPLICATIONS

Upholstery
Wallcovering
Panel

COMPOSITIONS

84% PE
16% Polyester

WIDTH

137cm

#G4 SERIES

APPLICATIONS

Upholstery
Wallcovering
Panel

COMPOSITIONS

84% PE
16% Polyester

WIDTH

137cm



G4 - 01



G4 - 02



G4 - 03



G4 - 04

#G4 SERIES

APPLICATIONS

Upholstery
Wallcovering
Panel

COMPOSITIONS

84% PE
16% Polyester

WIDTH

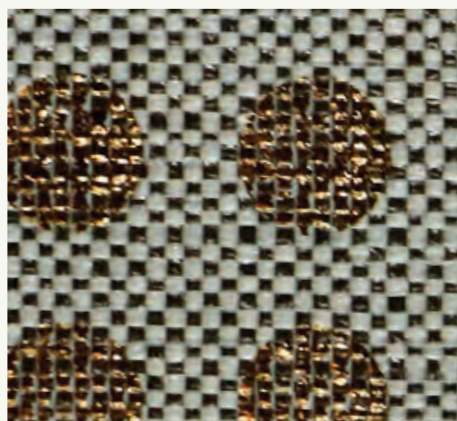
137cm



G4 - 05



G4 - 06



G4 - 07



G4 - 08

#G5 SERIES

APPLICATIONS

Upholstery
Wallcovering
Panel

COMPOSITIONS

84% PE
16% Polyester

WIDTH

137cm

#G5 SERIES

APPLICATIONS

Upholstery
Wallcovering
Panel

COMPOSITIONS

84% PE
16% Polyester

WIDTH

137cm



#G5 SERIES

APPLICATIONS

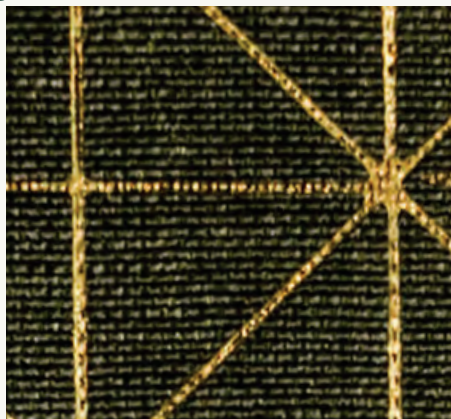
Upholstery
Wallcovering
Panel

COMPOSITIONS

84% PE
16% Polyester

WIDTH

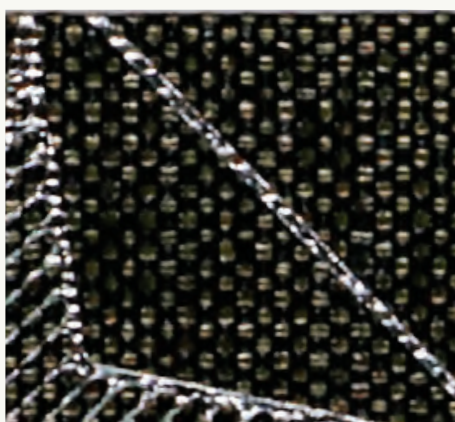
137cm



G5 - 02



G5 - 03



G5 - 04



G5 - 05



G5 - 06



G5 - 07

#G6 SERIES

APPLICATIONS

Upholstery
Wallcovering
Panel

COMPOSITIONS

84% PE
16% Polyester

WIDTH

137cm

#G6 SERIES

APPLICATIONS

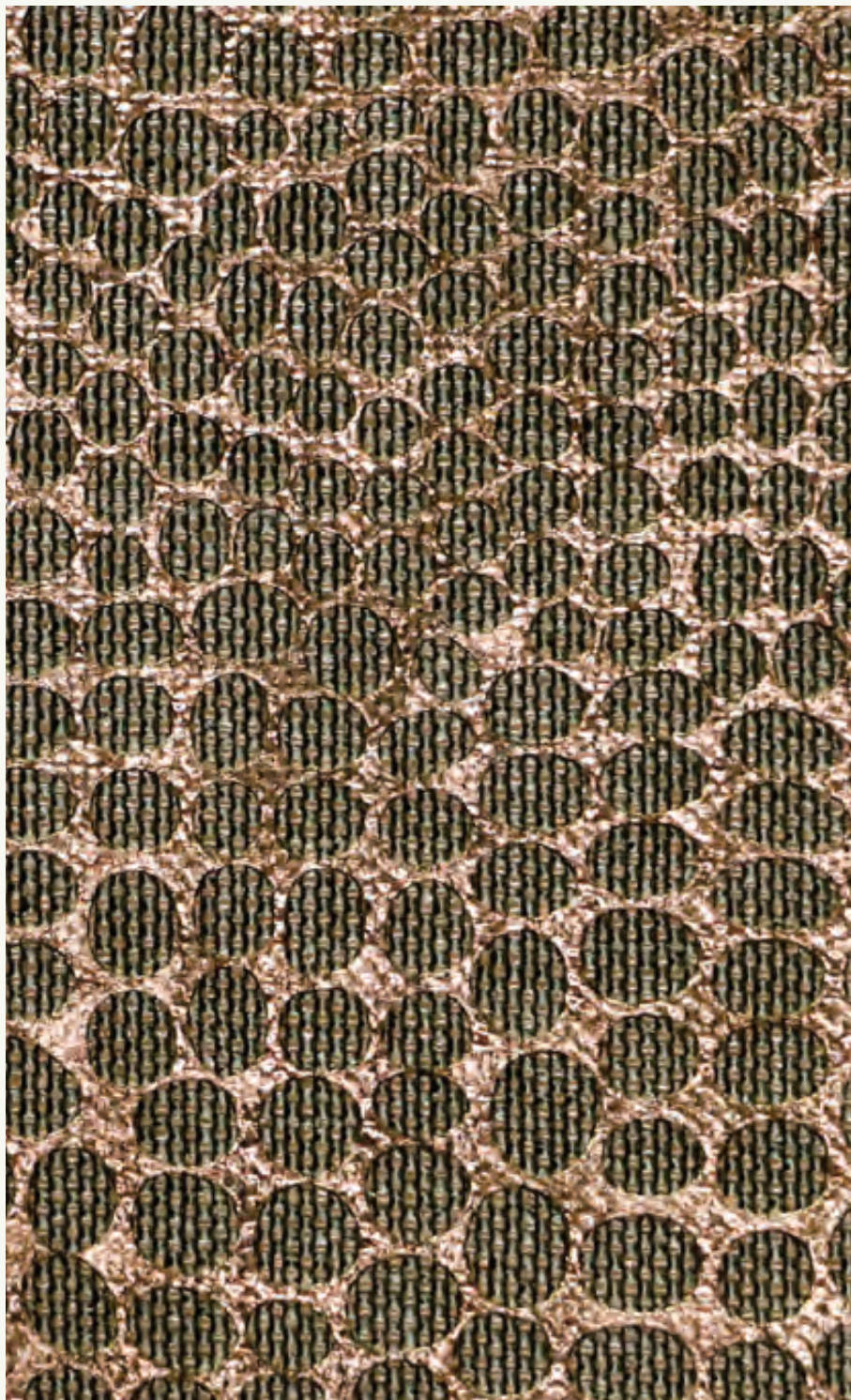
Upholstery
Wallcovering
Panel

COMPOSITIONS

84% PE
16% Polyester

WIDTH

137cm



G6 - 01

#G6 SERIES

APPLICATIONS

Upholstery
Wallcovering
Panel

COMPOSITIONS

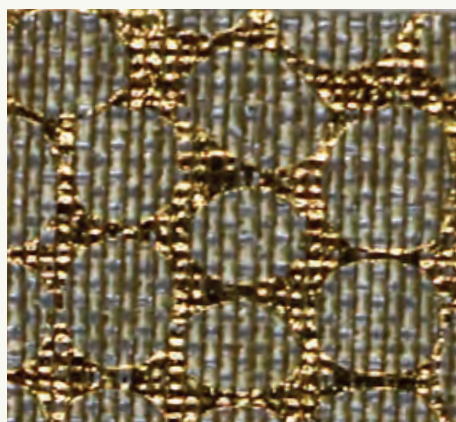
84% PE
16% Polyester

WIDTH

137cm



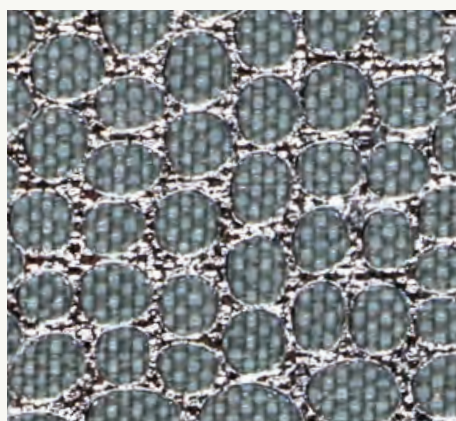
G6 - 01



G6 - 02



G6 - 03



G6 - 04

#G6 SERIES

APPLICATIONS

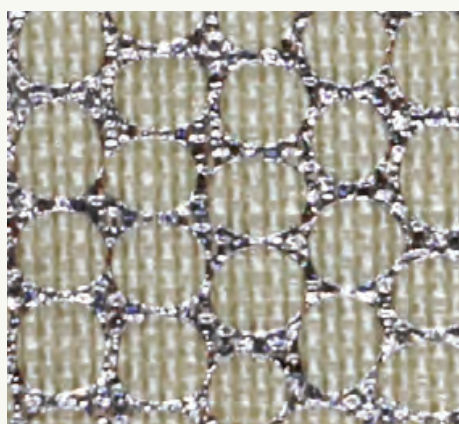
Upholstery
Wallcovering
Panel

COMPOSITIONS

84% PE
16% Polyester

WIDTH

137cm



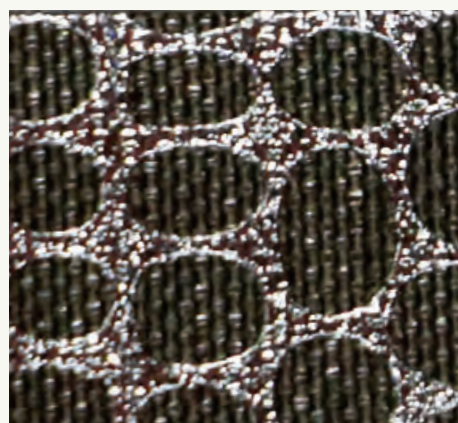
G6 - 05



G6 - 06



G6 - 07



G6 - 08

#G7 SERIES

APPLICATIONS

Upholstery
Wallcovering
Panel

COMPOSITIONS

84% PE
16% Polyester

WIDTH

137cm



#G7 SERIES

APPLICATIONS

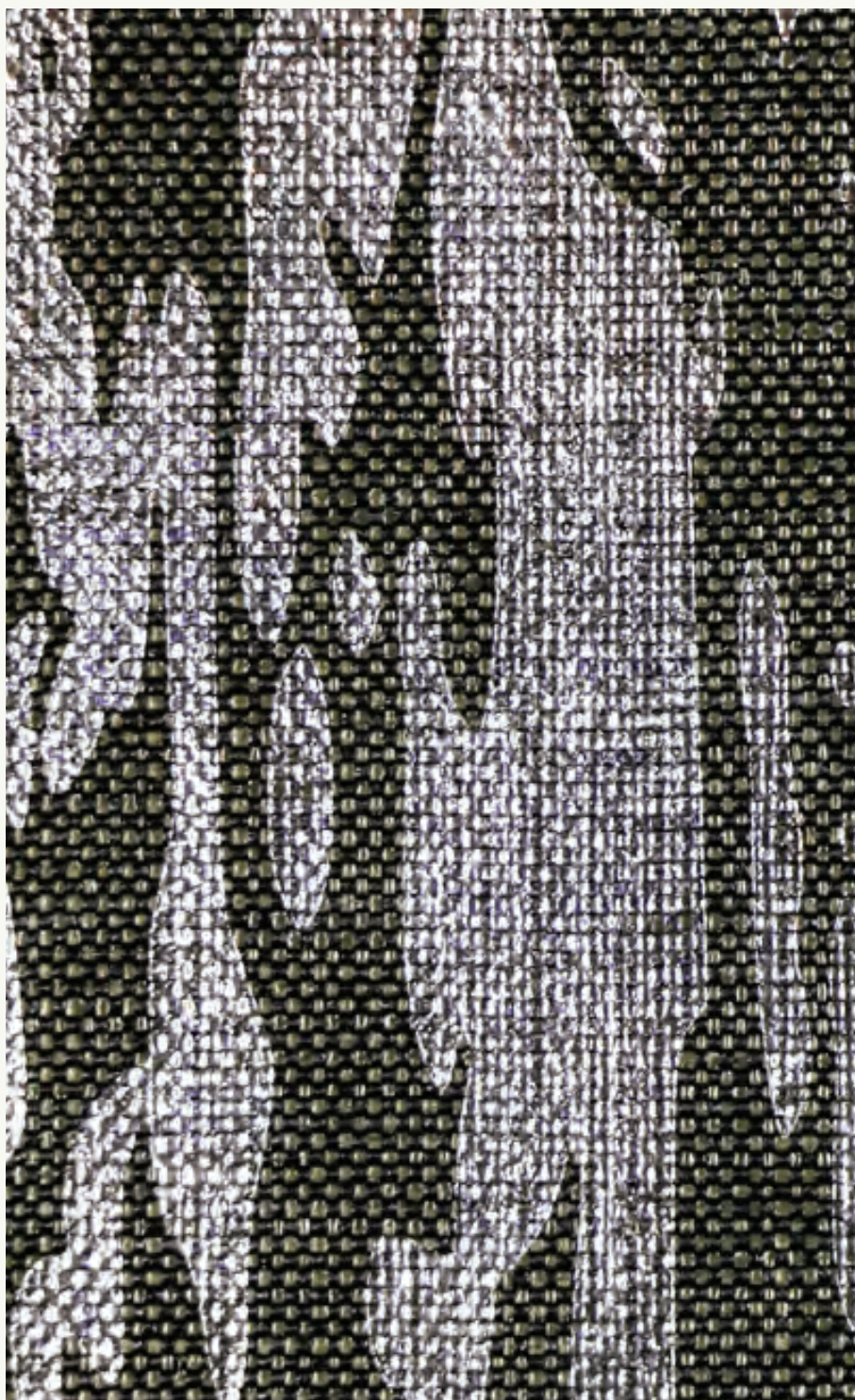
Upholstery
Wallcovering
Panel

COMPOSITIONS

84% PE
16% Polyester

WIDTH

137cm



#G7 SERIES

APPLICATIONS

Upholstery
Wallcovering
Panel

COMPOSITIONS

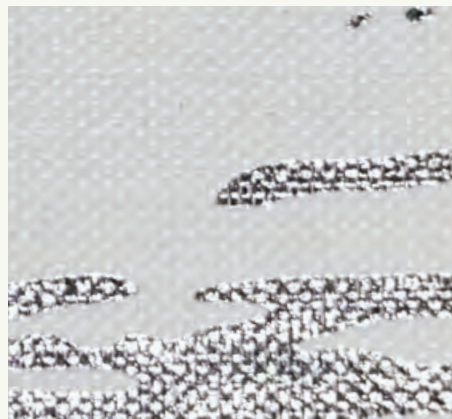
84% PE
16% Polyester

WIDTH

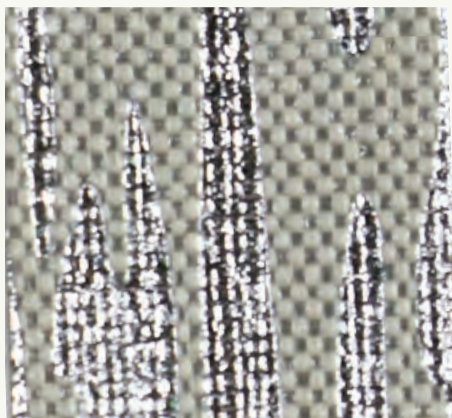
137cm



G7 - 01



G7 - 02



G7 - 03



G7 - 04

#G7 SERIES

APPLICATIONS

Upholstery
Wallcovering
Panel

COMPOSITIONS

84% PE
16% Polyester

WIDTH

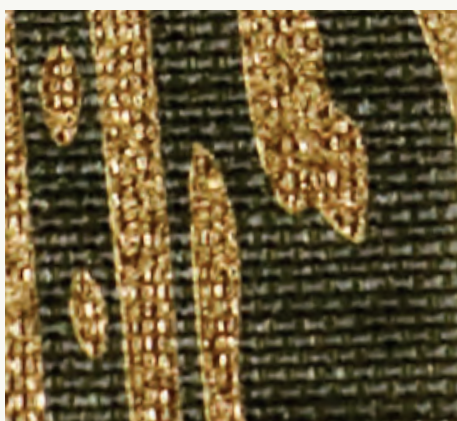
137cm



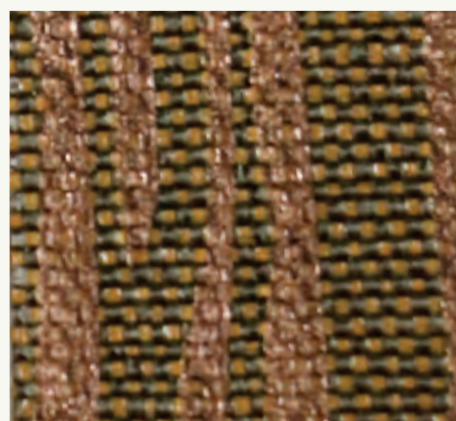
G7 - 05



G7 - 06



G7 - 07



G7 - 08

#G8 SERIES

APPLICATIONS

Upholstery
Wallcovering
Panel

COMPOSITIONS

82% PE
16% Polyester

WIDTH

137cm

#G8 SERIES

APPLICATIONS

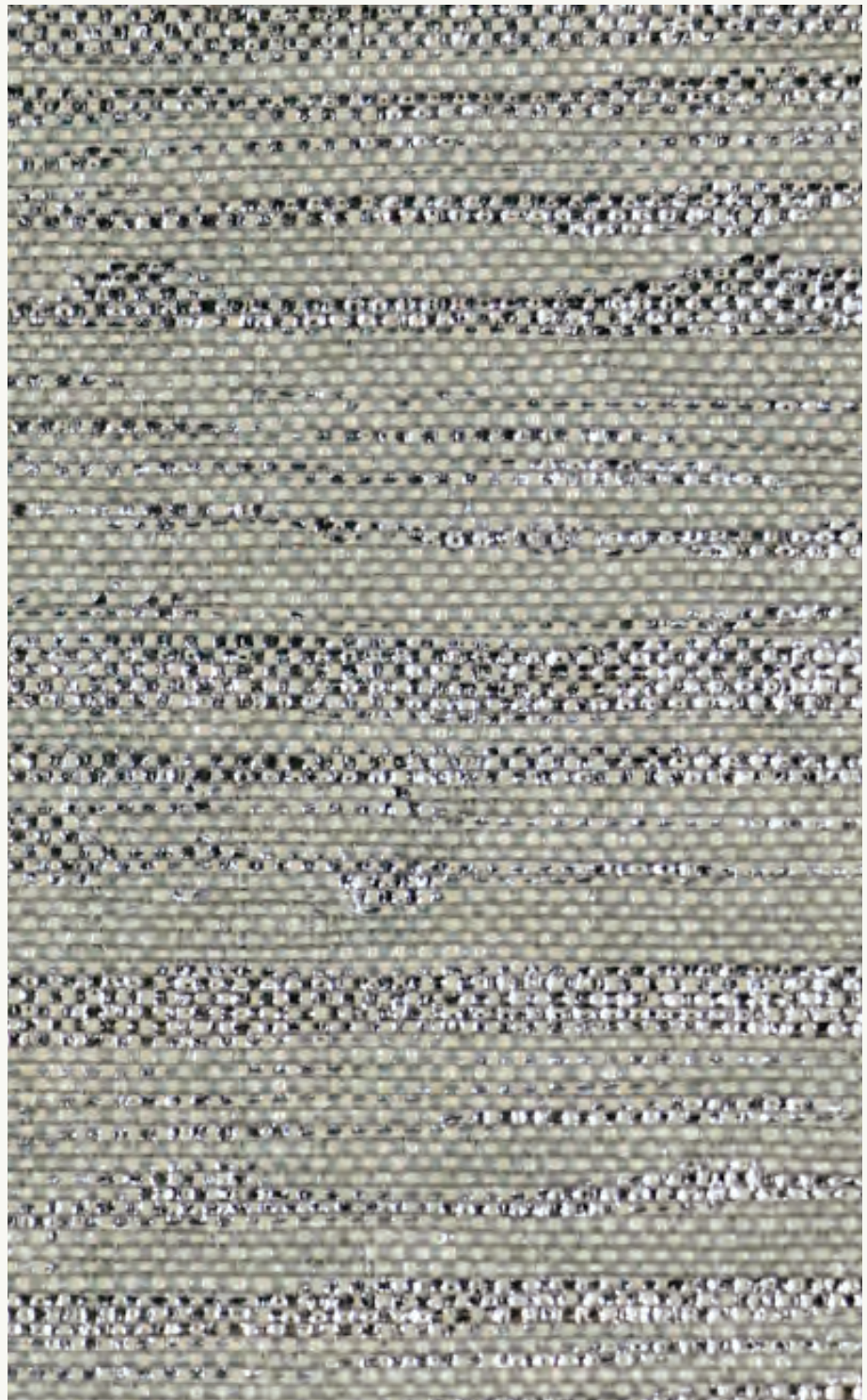
Upholstery
Wallcovering
Panel

COMPOSITIONS

84% PE
16% Polyester

WIDTH

137cm



G8 - 01

#G8 SERIES

APPLICATIONS

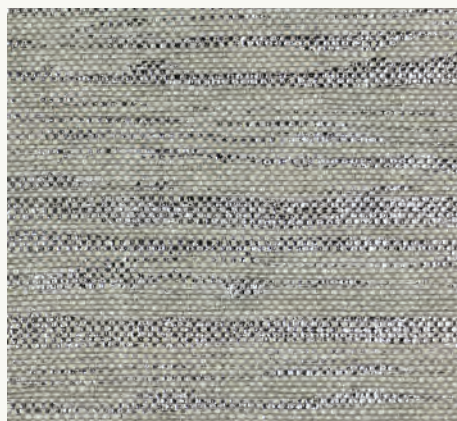
Upholstery
Wallcovering
Panel

COMPOSITIONS

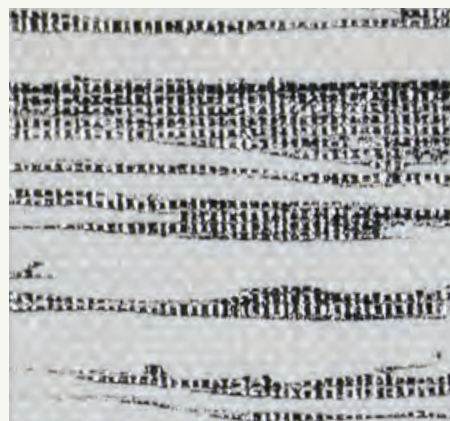
84% PE
16% Polyester

WIDTH

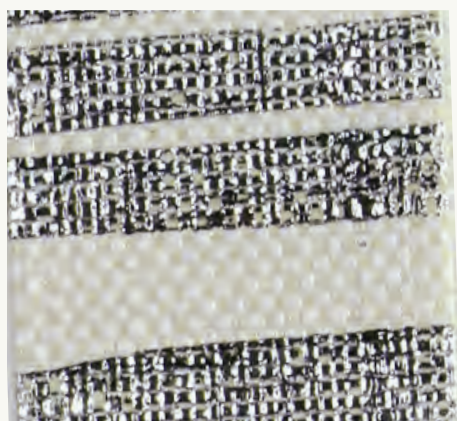
137cm



G8 - 01



G8 - 02



G8 - 03



G8 - 04

#G8 SERIES

APPLICATIONS

Upholstery
Wallcovering
Panel

COMPOSITIONS

84% PE
16% Polyester

WIDTH

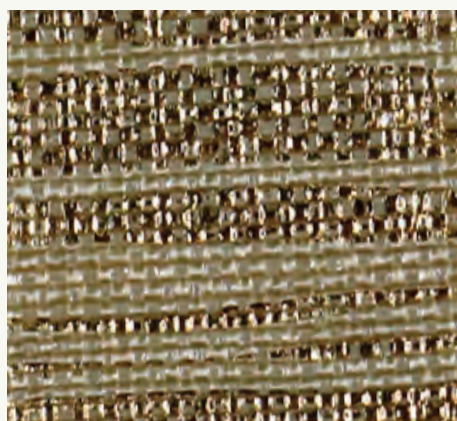
137cm



G8 - 05



G8 - 06



G8 - 07



G8 - 08

#M118 - 131 SERIES

DURABILITY

Durable

Stands up to abuse in high traffic areas.
200,000 to 1 million double rubs on
Wyzenbeek Abrasion Test.

Colourfast / Lightfast

Solution dyed.
Colour not affected by cleaning products
(including diluted bleach) or light exposure.

CLEANABILITY

Stain Resistant Yarns

Water and stains do not penetrate
the extruded yarns.

Easy to Clean

Can be aggressively cleaned with water, solvent
cleaners and diluted bleach.

Anti-Microbial

Inherently anti-bacterial, anti-fungal, anti-staph.



#ZX SERIES

#G1 - G8 SERIES

DURABILITY



DURABLE

Stands up to abuse in high-traffic areas. 200,000 to 1 million double rubs on the Wyzenbeek Abrasion Test.



COLOURFAST/ LIGHTFAST

Solution dyed. Colour not affected by cleaning products (including diluted bleach) or light exposure.



TACKABLE

Highly tackable yarns can "move back" into position.



PERFORMANCE WITHOUT FINISHES

No topical or chemical finishes, all performance qualities are inherent to the yarn.

CLEANABILITY



STAIN RESISTANT YARNS

Water and stains do not penetrate the extruded yarns.



EASY TO CLEAN

Can be aggressively cleaned with water, solvent cleaners and diluted bleach.



ANTI-MICROBIAL

Inherently antibacterial, anti-fungal, anti-staph.

#ZX SERIES

#G1 - G8 SERIES

SUSTAINABLE + INDUSTRY PROVEN

100% PVC FREE

Free of PVC, chlorine, plasticizers, heavy metals and ozone depleting chemicals.

BIOBASED VERSION OFFERED

The world's first Biobased high-performance textile. Biobased PE is a true plant-based product with a significantly reduced carbon footprint.

PROTECTED

7-year warranty and 30+ year track record.

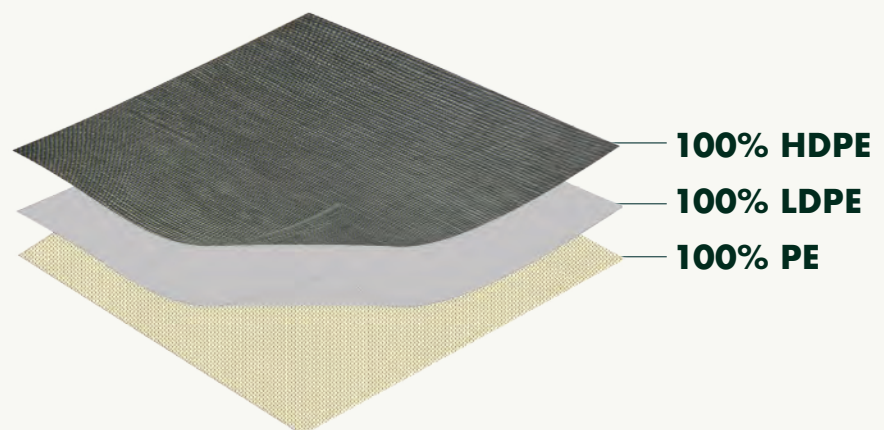
PRODUCT TECHNICAL PARAMETERS

Fabric Grammage: 300g - 350g/m

Hot Melt Adhesive: 35 - 36g/m

Non - Woven : 75-80g/m

Thickness: 1.5mm - 1.6mm



TERMS & CONDITIONS

STORAGE

Rolls of paperbacked PE should be stored so that a minimum weight rests on each piece.
Do not stand on end.

EXAMINATIONS

All wallcoverings must be examined for pattern, color and quality. Make sure that multiple rolls match each other. Carefully inspect the wallcovering prior to cutting, as cut material cannot be returned.

DO NOT HANG MORE THAN THREE DROPS without reviewing for shade consistency. Bear in mind that minor shading is to be expected with woven wallcovering.

ADHESIVE

Walls must be completely smooth. The walls should be prepared with a quality wallcovering primer chosen at the discretion of the installer.

HANGING

Use a heavy duty adhesive. Adhesive should not be thinned with chemical solvent. Apply the adhesive to the paper backing. When hanging acrylic backed PE apply the adhesive to the substrate.

We recommend table trimming and butting.

TRIM 2 INCHES FROM BOTH SIDES. USE A NEW BLADE FOR EACH SHEET. If you choose to double cut on the wall, a Zipper Knife (double cutter) **MUST** be used to avoid cutting into the wall surface. If the wall surface is cut, the seams will eventually split and we will not accept any responsibility. When hanging paper backed PE, apply the adhesive to the paper backing. When hanging acrylic backed PE, apply the adhesive to the wall.

TERMS & CONDITIONS

HANGING GUIDE

1. Cut and hang the drops consecutively including pieces over doors and windows.
2. PE may have some minor shading or paneling. Shading tends to be optical (depending on lighting at the installation site), and should be closely monitored through the hanging process. Color uniformity is best evaluated under permanent light conditions.
3. **AFTER THREE DROPS ARE INSTALLED, INSPECT THE WALLCOVERING** to insure that the installer and designer are satisfied with the overall look.
4. Paneling or shading may occur. **ONLY** reverse the drops in the instance where paneling occurs which may help minimize effect.*
5. Do not paste more than two drops at a time.
6. Do not let glue set up longer than **FIVE MINUTES**.
7. Drop should be rolled after passing. Not Folded.
8. If PE tends to curl away from the top or bottom of the wall, prime the top or bottom edges of the wall with adhesive. Allow adhesive to become tacky before hanging fabric.
9. **DO NOT USE A SEAM ROLLER OF ANY KIND AT THE SEAMS OR EDGES.** Smooth the seams with a plastic scraper (Walwiz) or brush.
10. To clean any excess adhesive at seams, wipe with a slightly damp sponge using clean, hot water. Dry immediately with a terry towel.

* Note: Reverse hanging may not be possible on PE patterns that require straight repeat matches.

HONG KONG

THAILAND

BECA

TRADING COMPANY

O +852 2781 3409

M +852 9311 5618

WeChat becatrading

E contact@becatrading.com

